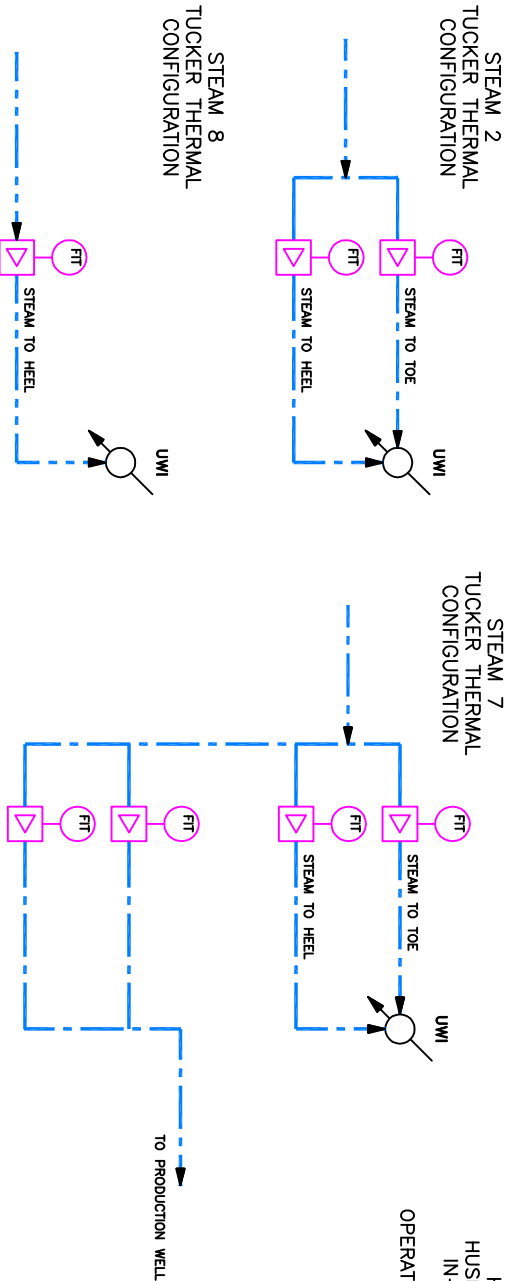


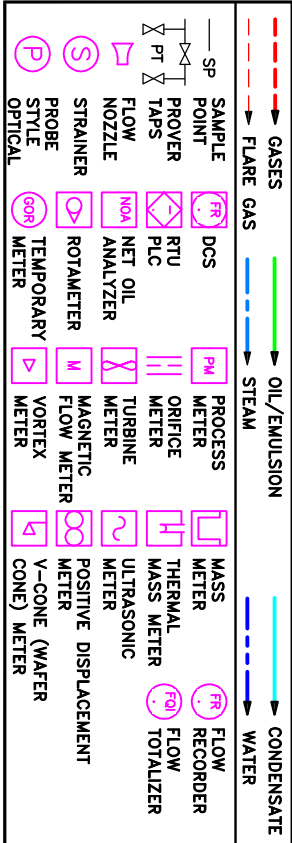
AB IF 0089451
HUSKY 12-28-064-04W4
HUSKY TUCKER 12-28 INJECTION
IN-SITU OIL SANDS INJECTION
LICENSEE: UNKNOWN
OPERATOR: HUSKY OIL OPERATIONS LTD



AB IF 0089451										WELL PAD A									
WELL NAME	UWI	LSD	LC/OFFER	DETAIL	STATUS	FUEL	TOE	HEEL		WELL NAME	UWI	LSD	LC/OFFER	DETAIL	STATUS	FUEL	TOE	HEEL	
A1S	105/05-32-064-04W4/00	09-32-064-04W4	HUSKY	STEAM 8	PRODUCING	-	-	FC-101D		A1S	105/05-32-064-04W4/00	09-32-064-04W4	HUSKY	STEAM 8	PRODUCING	-	-	FC-101D	
A2S	110/12-32-064-04W4/00	09-32-064-04W4	HUSKY	STEAM 8	PRODUCING	-	-	FC-102D		A2S	110/12-32-064-04W4/00	09-32-064-04W4	HUSKY	STEAM 8	PRODUCING	-	-	FC-102D	
A3S	108/12-32-064-04W4/00	09-32-064-04W4	HUSKY	STEAM 8	PRODUCING	-	-	FC-103D		A3S	108/12-32-064-04W4/00	09-32-064-04W4	HUSKY	STEAM 8	PRODUCING	-	-	FC-103D	
A4S	109/12-32-064-04W4/00	09-32-064-04W4	HUSKY	STEAM 8	PRODUCING	-	-	FC-104D		A4S	109/12-32-064-04W4/00	09-32-064-04W4	HUSKY	STEAM 8	PRODUCING	-	-	FC-104D	
A5S	107/12-32-064-04W4/00	09-32-064-04W4	HUSKY	STEAM 2	PRODUCING	-	-	FC-105F		A5S	107/12-32-064-04W4/00	09-32-064-04W4	HUSKY	STEAM 2	PRODUCING	-	-	FC-105F	
A6S	103/13-32-064-04W4/00	16-32-064-04W4	HUSKY	STEAM 2	PRODUCING	-	-	FC-106F		A6S	103/13-32-064-04W4/00	16-32-064-04W4	HUSKY	STEAM 2	PRODUCING	-	-	FC-106F	
A7S	107/13-32-064-04W4/00	16-32-064-04W4	HUSKY	STEAM 8	PRODUCING	-	-	FC-107D		A7S	107/13-32-064-04W4/00	16-32-064-04W4	HUSKY	STEAM 8	PRODUCING	-	-	FC-107D	
A8S	108/13-32-064-04W4/00	16-32-064-04W4	HUSKY	STEAM 8	PRODUCING	-	-	FC-108D		A8S	108/13-32-064-04W4/00	16-32-064-04W4	HUSKY	STEAM 8	PRODUCING	-	-	FC-108D	
A9S	110/13-32-064-04W4/00	16-32-064-04W4	HUSKY	STEAM 7	PRODUCING	-	-	FC-109H		A9S	110/13-32-064-04W4/00	16-32-064-04W4	HUSKY	STEAM 7	PRODUCING	-	-	FC-109H	
A10S	116/13-32-064-04W4/00	16-32-064-04W4	HUSKY	STEAM 7	PRODUCING	-	-	FC-110H		A10S	116/13-32-064-04W4/00	16-32-064-04W4	HUSKY	STEAM 7	PRODUCING	-	-	FC-110H	
A11S	114/13-32-064-04W4/00	16-32-064-04W4	HUSKY	STEAM 7	PRODUCING	-	-	FC-111H		A11S	114/13-32-064-04W4/00	16-32-064-04W4	HUSKY	STEAM 7	PRODUCING	-	-	FC-111H	
A12S	109/14-32-064-04W4/00	16-32-064-04W4	HUSKY	STEAM 7	PRODUCING	-	-	FC-112J		A12S	109/14-32-064-04W4/00	16-32-064-04W4	HUSKY	STEAM 7	PRODUCING	-	-	FC-112J	
A13S	118/13-32-064-04W4/00	09-32-064-04W4	HUSKY	STEAM 7	PRODUCING	-	-	FC-113J		A13S	118/13-32-064-04W4/00	09-32-064-04W4	HUSKY	STEAM 7	PRODUCING	-	-	FC-113J	
A14S	120/13-32-064-04W4/00	09-32-064-04W4	HUSKY	STEAM 7	PRODUCING	-	-	FC-114H		A14S	120/13-32-064-04W4/00	09-32-064-04W4	HUSKY	STEAM 7	PRODUCING	-	-	FC-114H	
A15S	126/12-32-064-04W4/00	09-32-064-04W4	HUSKY	STEAM 7	PRODUCING	-	-	FC-115J		A15S	126/12-32-064-04W4/00	09-32-064-04W4	HUSKY	STEAM 7	PRODUCING	-	-	FC-115J	
A16S	123/12-32-064-04W4/00	09-32-064-04W4	HUSKY	STEAM 7	PRODUCING	-	-	FC-116J		A16S	123/12-32-064-04W4/00	09-32-064-04W4	HUSKY	STEAM 7	PRODUCING	-	-	FC-116J	
A17S	115/12-32-064-04W4/00	09-32-064-04W4	HUSKY	STEAM 7	PRODUCING	-	-	FC-117H		A17S	115/12-32-064-04W4/00	09-32-064-04W4	HUSKY	STEAM 7	PRODUCING	-	-	FC-117H	
A18S	111/12-32-064-04W4/00	09-32-064-04W4	HUSKY	STEAM 7	PRODUCING	-	-	FC-118J		A18S	111/12-32-064-04W4/00	09-32-064-04W4	HUSKY	STEAM 7	PRODUCING	-	-	FC-118J	
A19S	117/12-32-064-04W4/00	09-32-064-04W4	HUSKY	STEAM 7	PRODUCING	-	-	FC-119H		A19S	117/12-32-064-04W4/00	09-32-064-04W4	HUSKY	STEAM 7	PRODUCING	-	-	FC-119H	
A20S	112/12-32-064-04W4/00	09-32-064-04W4	HUSKY	STEAM 7	PRODUCING	-	-	FC-120H		A20S	112/12-32-064-04W4/00	09-32-064-04W4	HUSKY	STEAM 7	PRODUCING	-	-	FC-120H	
A21S	118/12-32-064-04W4/00	09-32-064-04W4	HUSKY	STEAM 7	PRODUCING	-	-	FC-121H		A21S	118/12-32-064-04W4/00	09-32-064-04W4	HUSKY	STEAM 7	PRODUCING	-	-	FC-121H	
A22S	121/12-32-064-04W4/00	09-32-064-04W4	HUSKY	STEAM 7	PRODUCING	-	-	FC-122J		A22S	121/12-32-064-04W4/00	09-32-064-04W4	HUSKY	STEAM 7	PRODUCING	-	-	FC-122J	
A23S	115/05-32-064-04W4/00	09-32-064-04W4	HUSKY	STEAM 7	PRODUCING	-	-	FC-123J		A23S	115/05-32-064-04W4/00	09-32-064-04W4	HUSKY	STEAM 7	PRODUCING	-	-	FC-123J	
A24S	112/05-32-064-04W4/00	09-32-064-04W4	HUSKY	STEAM 7	PRODUCING	-	-	FC-124H		A24S	112/05-32-064-04W4/00	09-32-064-04W4	HUSKY	STEAM 7	PRODUCING	-	-	FC-124H	

AB IF 0089451										WELL PAD B									
WELL NAME	UWI	LSD	LC/OFFER	DETAIL	STATUS	FUEL	TOE	HEEL		WELL NAME	UWI	LSD	LC/OFFER	DETAIL	STATUS	FUEL	TOE	HEEL	
B2S	102/04-32-064-04W4/00	01-32-064-04W4	HUSKY	STEAM 2	PRODUCING	-	-	FC-202C		B2S	102/04-32-064-04W4/00	01-32-064-04W4	HUSKY	STEAM 2	PRODUCING	-	-	FC-202C	
B1S	105/04-32-064-04W4/00	01-32-064-04W4	HUSKY	STEAM 2	PRODUCING	-	-	FC-201C		B1S	105/04-32-064-04W4/00	01-32-064-04W4	HUSKY	STEAM 2	PRODUCING	-	-	FC-201C	
B3S	107/04-32-064-04W4/00	01-32-064-04W4	HUSKY	STEAM 2	PRODUCING	-	-	FC-203C		B3S	107/04-32-064-04W4/00	01-32-064-04W4	HUSKY	STEAM 2	PRODUCING	-	-	FC-203C	
B4S	108/04-32-064-04W4/00	01-32-064-04W4	HUSKY	STEAM 2	PRODUCING	-	-	FC-204C		B4S	108/04-32-064-04W4/00	01-32-064-04W4	HUSKY	STEAM 2	PRODUCING	-	-	FC-204C	
B5S	108/05-32-064-04W4/00	01-32-064-04W4	HUSKY	STEAM 2	PRODUCING	-	-	FC-205C		B5S	108/05-32-064-04W4/00	01-32-064-04W4	HUSKY	STEAM 2	PRODUCING	-	-	FC-205C	
B6S	109/05-32-064-04W4/00	08-32-064-04W4	HUSKY	STEAM 2	PRODUCING	-	-	FC-206C		B6S	109/05-32-064-04W4/00	08-32-064-04W4	HUSKY	STEAM 2	PRODUCING	-	-	FC-206C	
B7S	110/05-32-064-04W4/00	08-32-064-04W4	HUSKY	STEAM 2	PRODUCING	-	-	FC-207C		B7S	110/05-32-064-04W4/00	08-32-064-04W4	HUSKY	STEAM 2	PRODUCING	-	-	FC-207C	
B8S	111/05-32-064-04W4/00	08-32-064-04W4	HUSKY	STEAM 2	PRODUCING	-	-	FC-208C		B8S	111/05-32-064-04W4/00	08-32-064-04W4	HUSKY	STEAM 2	PRODUCING	-	-	FC-208C	
B9S	104/16-32-064-04W4/08	08-32-064-04W4	HUSKY	STEAM 2	PRODUCING	-	-	FC-209C		B9S	104/16-32-064-04W4/08	08-32-064-04W4	HUSKY	STEAM 2	PRODUCING	-	-	FC-209C	
B10S	106/16-32-064-04W4/09	08-32-064-04W4	HUSKY	STEAM 8	PRODUCING	-	-	FC-210D		B10S	106/16-32-064-04W4/09	08-32-064-04W4	HUSKY	STEAM 8	PRODUCING	-	-	FC-210D	
B11S	107/16-32-064-04W4/09	08-32-064-04W4	HUSKY	STEAM 8	PRODUCING	-	-	FC-211D		B11S	107/16-32-064-04W4/09	08-32-064-04W4	HUSKY	STEAM 8	PRODUCING	-	-	FC-211D	
B12S	109/16-32-064-04W4/09	08-32-064-04W4	HUSKY	STEAM 8	PRODUCING	-	-	FC-212D		B12S	109/16-32-064-04W4/09	08-32-064-04W4	HUSKY	STEAM 8	PRODUCING	-	-	FC-212D	
B9ES	112/16-32-064-04W4/00	01-32-064-04W4	HUSKY	STEAM 7	PRODUCING	-	-	FC-213D		B9ES	112/16-32-064-04W4/00	01-32-064-04W4	HUSKY	STEAM 7	PRODUCING	-	-	FC-213D	
B10ES	114/16-32-064-04W4/00	01-32-064-04W4	HUSKY	STEAM 7	PRODUCING	-	-	FC-214E		B10ES	114/16-32-064-04W4/00	01-32-064-04W4	HUSKY	STEAM 7	PRODUCING	-	-	FC-214E	
B11ES	116/16-32-064-04W4/00	01-32-064-04W4	HUSKY	STEAM 7	PRODUCING	-	-	FC-215E		B11ES	116/16-32-064-04W4/00	01-32-064-04W4	HUSKY	STEAM 7	PRODUCING	-	-	FC-215E	

- NOTES:
- A1S-A8S, B10S, B11S HAVE STEAM INJECTION TO THE HEEL ONLY.
 - TWO METER INSTALLATION, ACCESS TO ROUTE STEAM TO PRODUCTION WELLS NOT AVAILABLE.
 - FOUR METER INSTALLATION EXISTS AND FLOW METER USE IS DEPENDANT UPON THE WELL CONTROL MODE.



REF DWG NO	AGE/ OVERVIEW	REFERENCE DRAWING DESCRIPTION	NO	REVISION HISTORY	REV	DATE	ISSUED FOR	NO	CURRENT REVISION	ISSUED FOR	AS BUILT
MS-0000-01	FACILITY DRAWING	NO UPDATES FOR THIS REGION FROM ALTYSON HOUAND	8	NO UPDATES FOR THIS REGION FROM ALTYSON HOUAND	8	2016/02/24	AS BUILT	10	NO UPDATES FOR THIS REGION FROM ALTYSON HOUAND	DOC DATE	2016/02/12
MS-0001-01 & 02	GATHERING SYSTEM	UPDATED PER FIELD SUPPLIED MARKUPS	9	UPDATED PER FIELD SUPPLIED MARKUPS	9	2009/09/11	AS BUILT			DOC AUTHOR	PC
MS-0002-01 TO 05		UPDATED PER MARK-UPS SUPPLIED BY TNA QIU	3	UPDATED PER MARK-UPS SUPPLIED BY TNA QIU	3	2012/02/01	AS BUILT			SCALE	NIS
MS-0010-01	LACT UNIT	UPDATED PER MARK-UPS FROM ALTYSON HOUAND	4	UPDATED PER MARK-UPS FROM ALTYSON HOUAND	4	2013/06/07	AS BUILT			ALTERNATE IDENTIFIER	
		UPDATED PER MARK-UPS FROM ALTYSON HOUAND	5	UPDATED PER MARK-UPS FROM ALTYSON HOUAND	5	2014/06/20	AS BUILT			SURFACE LSD	12-28-064-04W4
		UPDATED FROM MARK-UPS SUPPLIED BY ALTYSON HOUAND	6	UPDATED FROM MARK-UPS SUPPLIED BY ALTYSON HOUAND	6	2015/02/24	AS BUILT			DOCUMENT IDENTIFIER	MS-0007-01
			7		7						

Husky Oil Operations Limited