



# PEACE RIVER IN SITU DIRECTIVE 54 PERFORMANCE PRESENTATION

Appendix

PREMIUM VALUE. DEFINED GROWTH. INDEPENDENT.

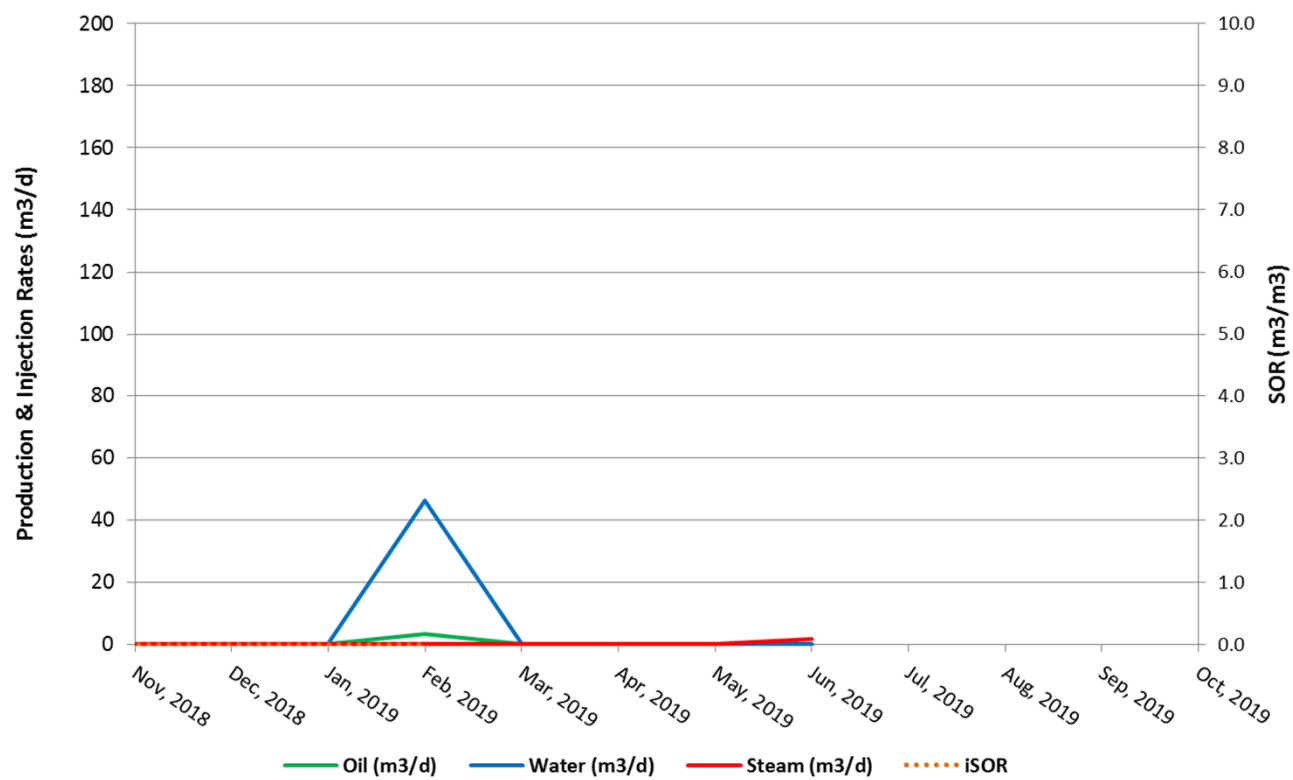


## PRC PRODUCTION PLOTS

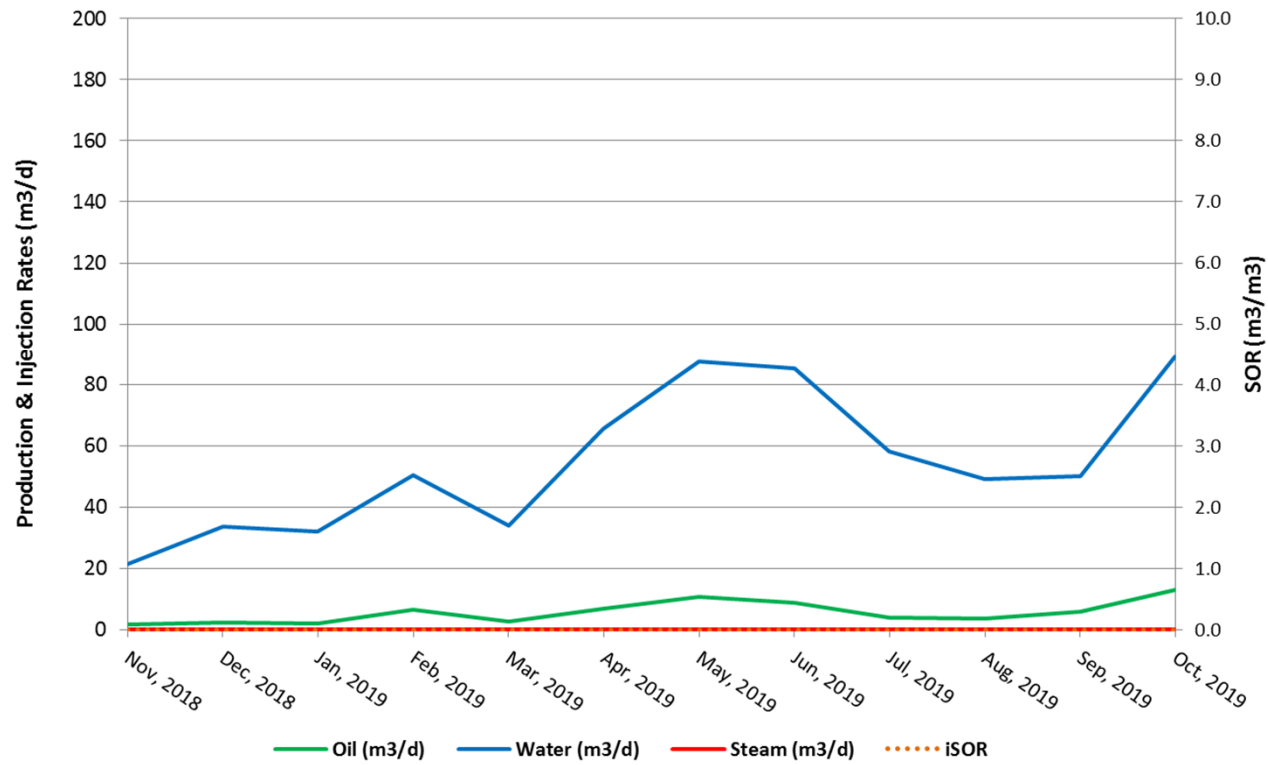
December 4, 2019

PREMIUM VALUE. DEFINED GROWTH. INDEPENDENT.

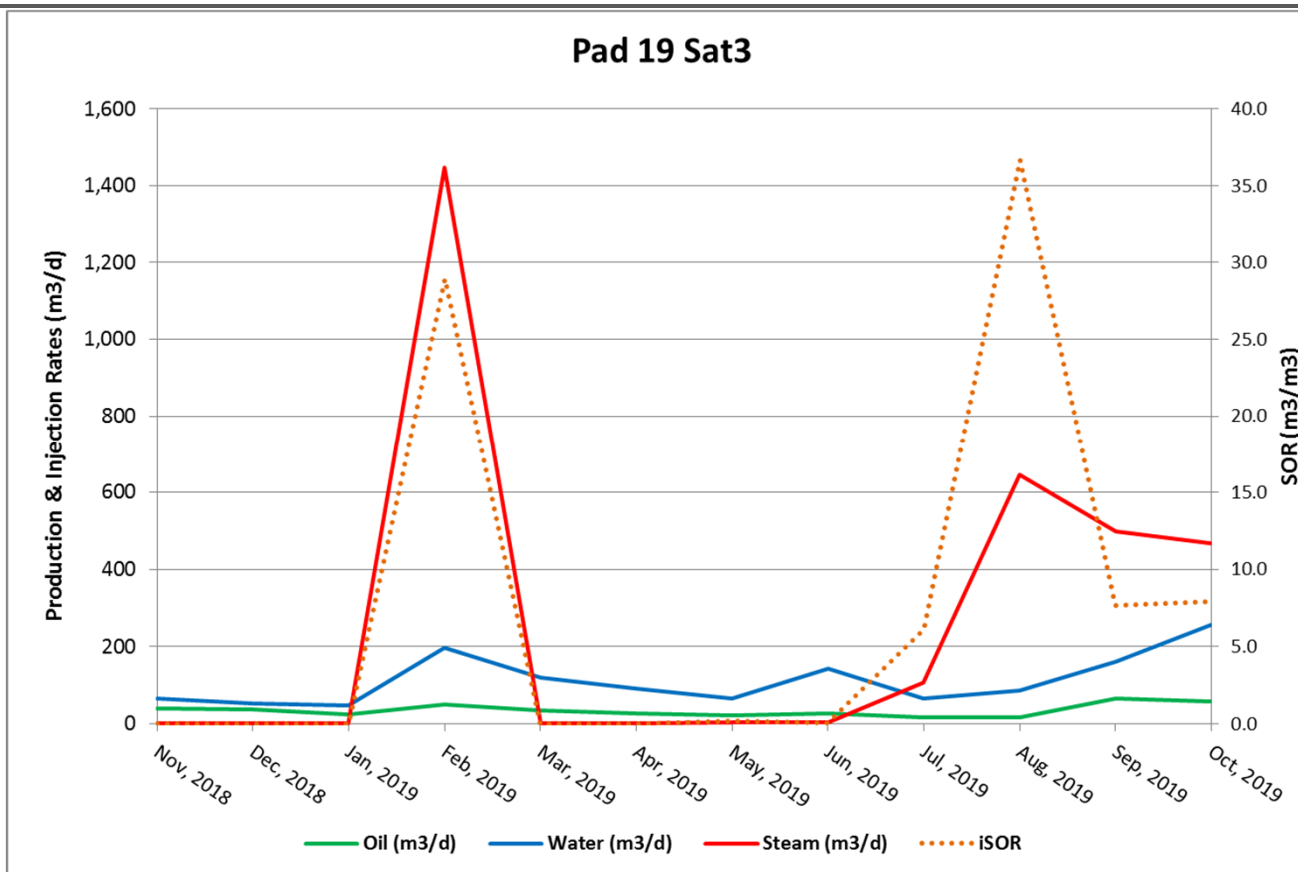
### Pad 19 Sat 1



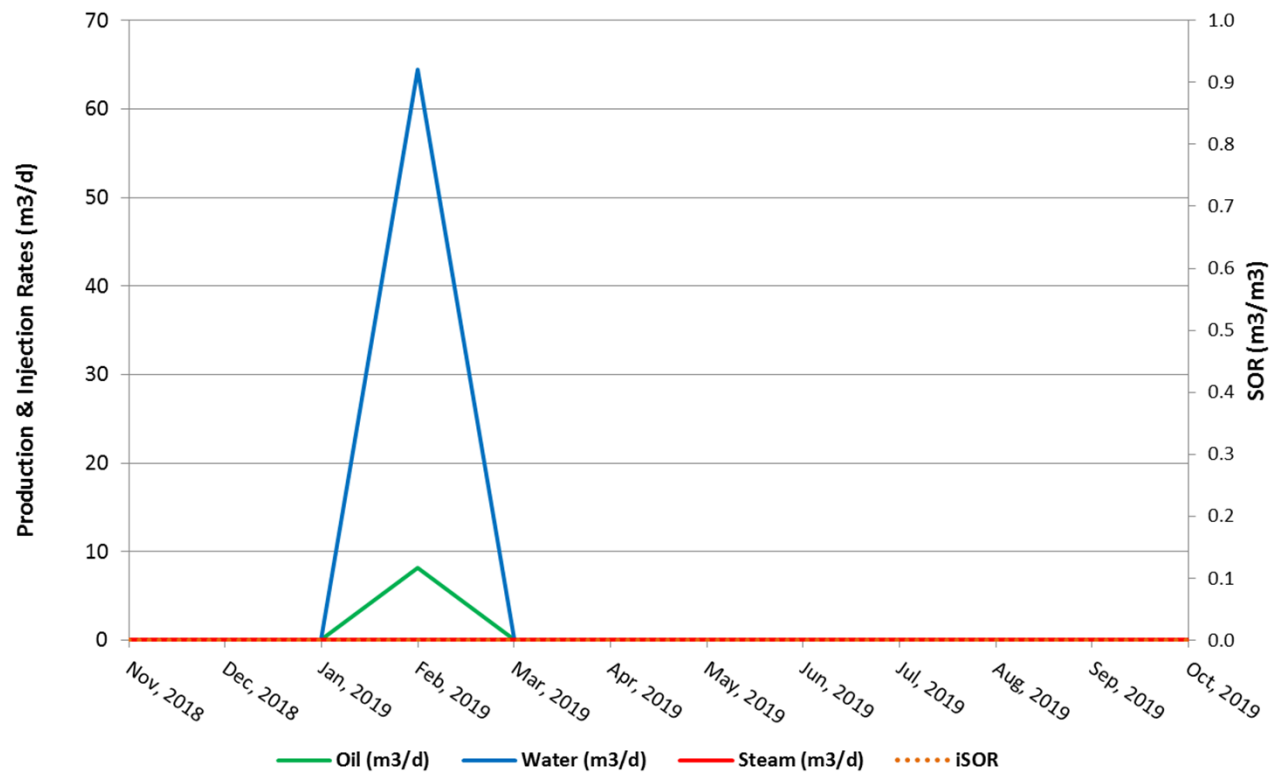
### Pad 19 Sat2



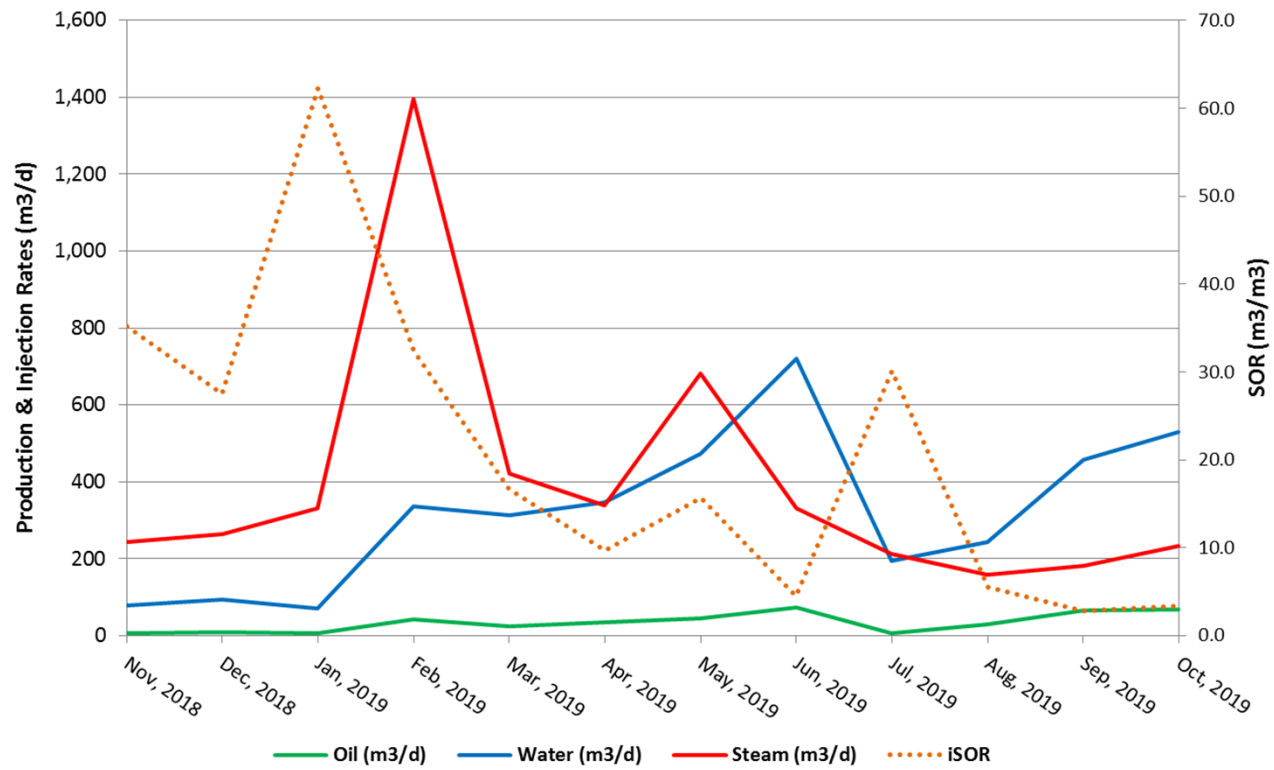
### Pad 19 Sat3



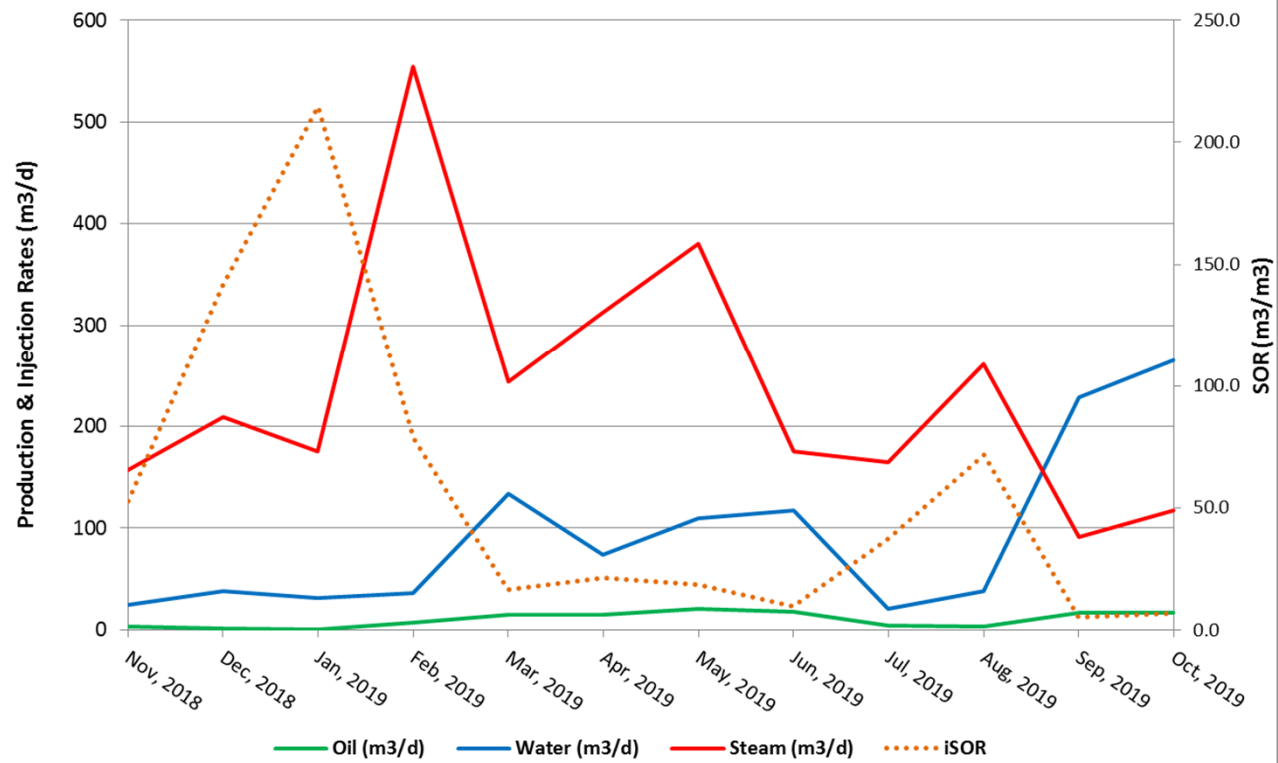
### Pad 19 Sat4



## Pad 20

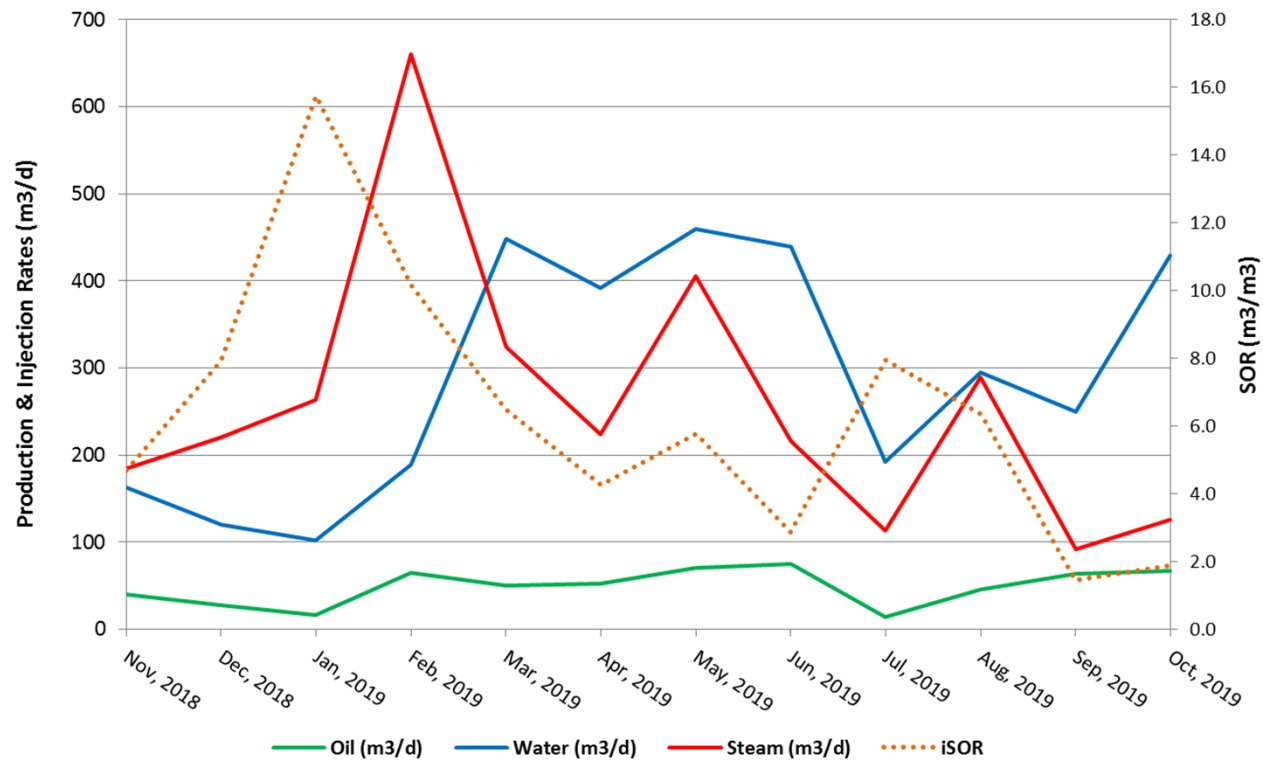


## Pad 20 Infills

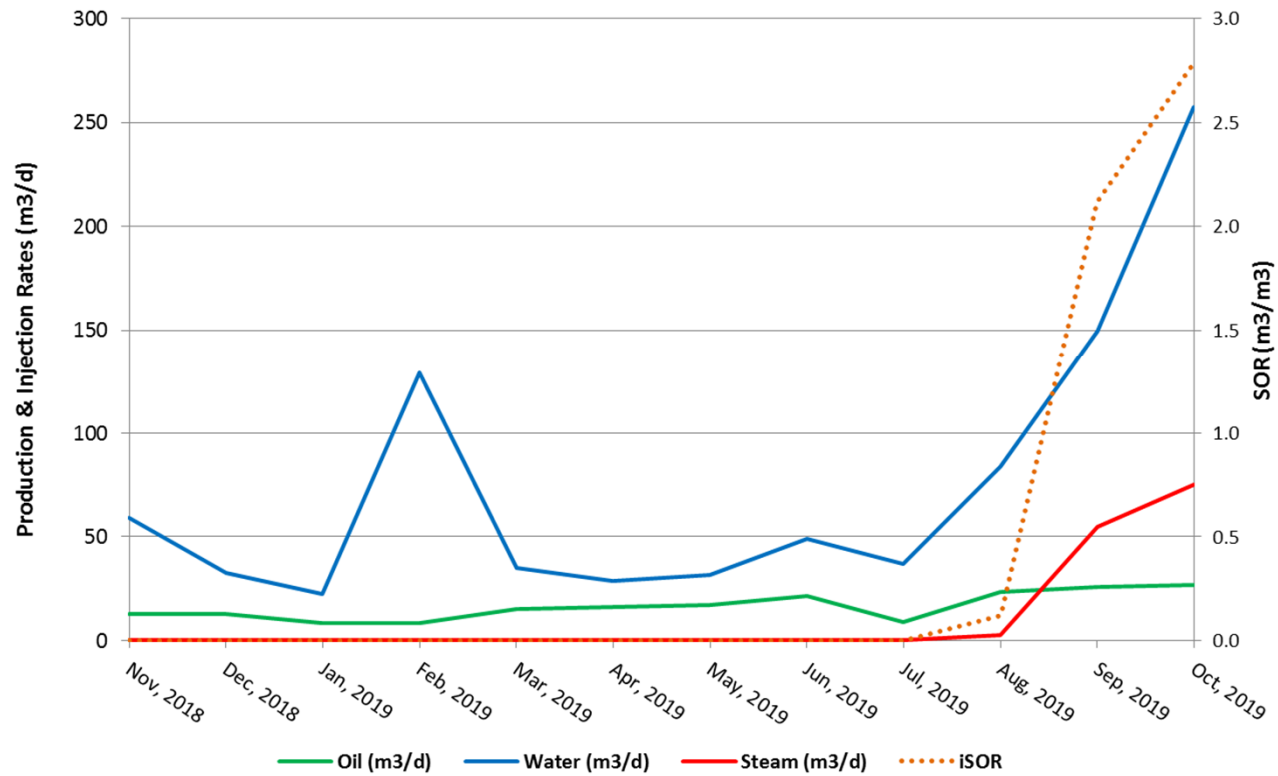




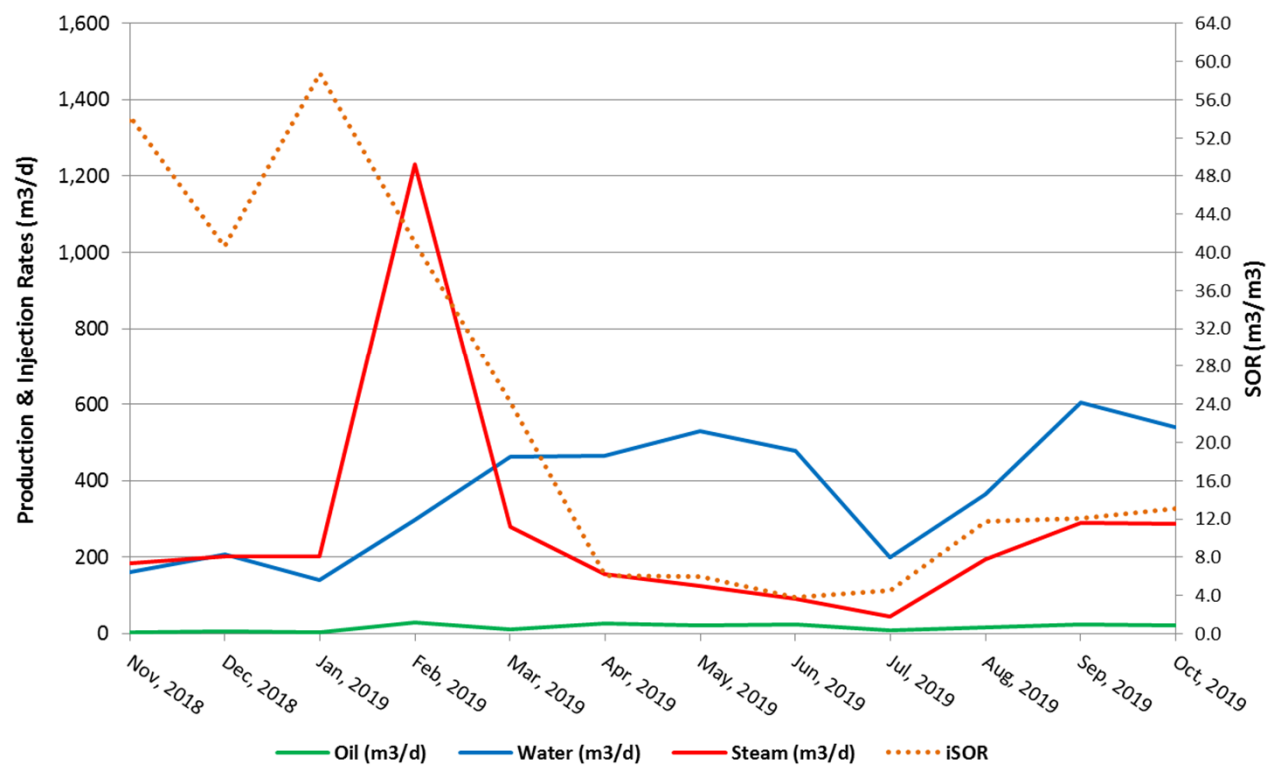
## Pad 21



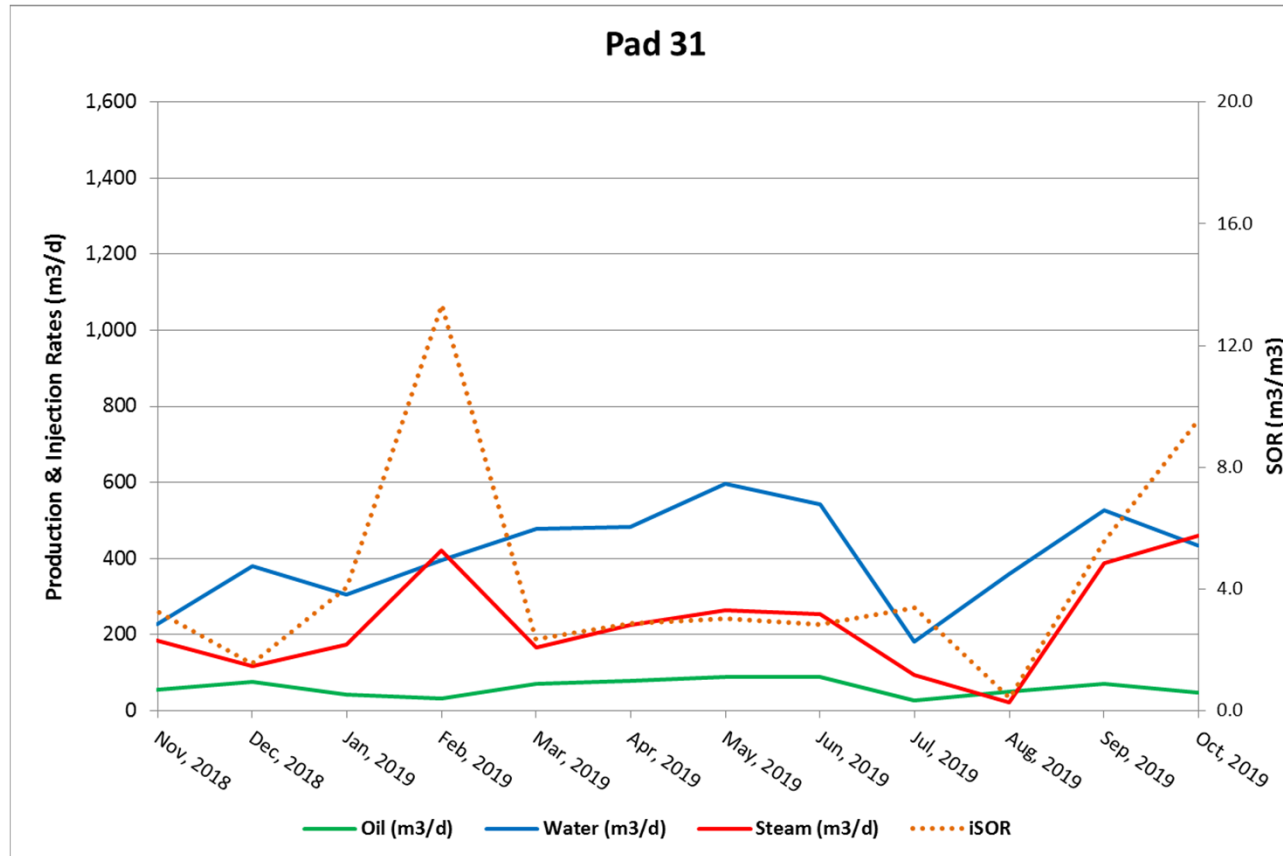
### Pad 21 Infills



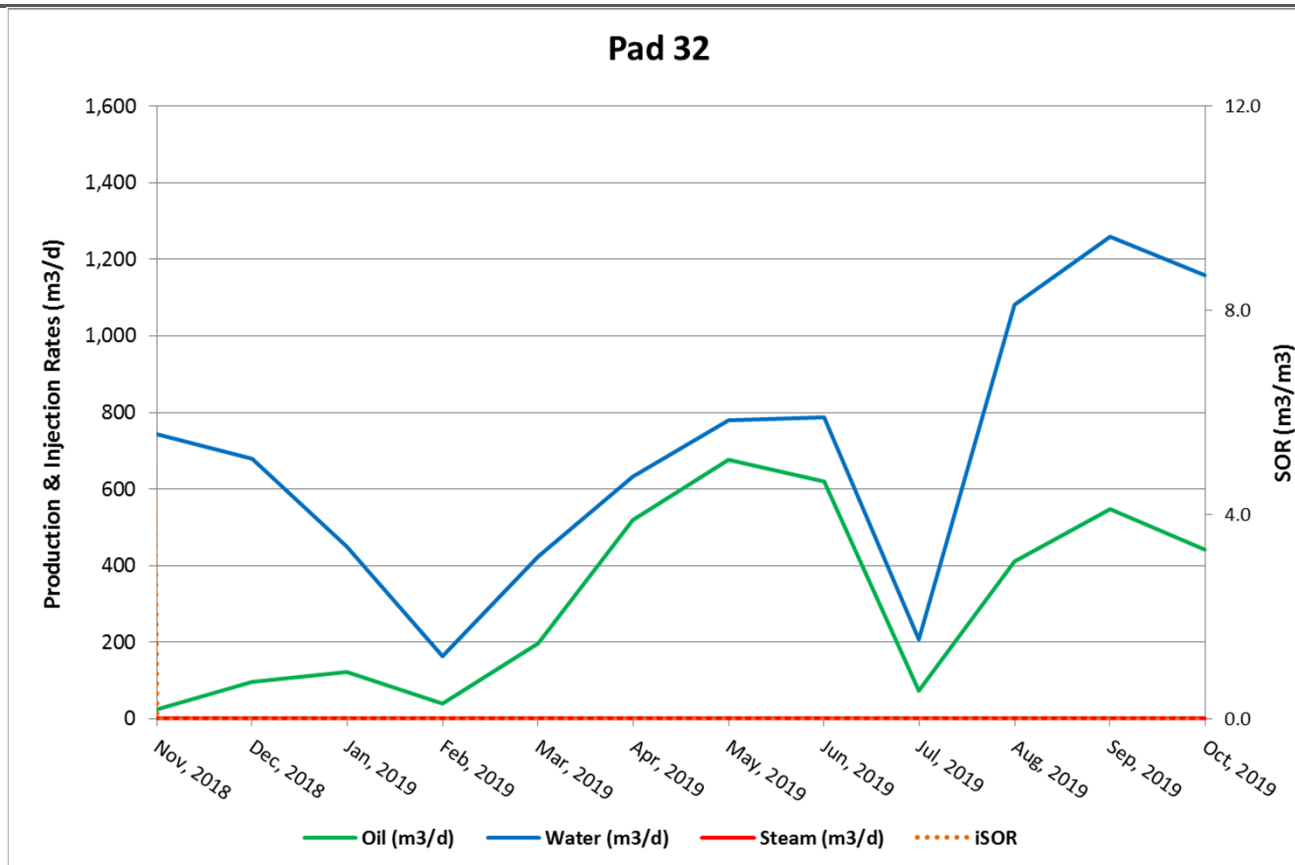
# Pad 30



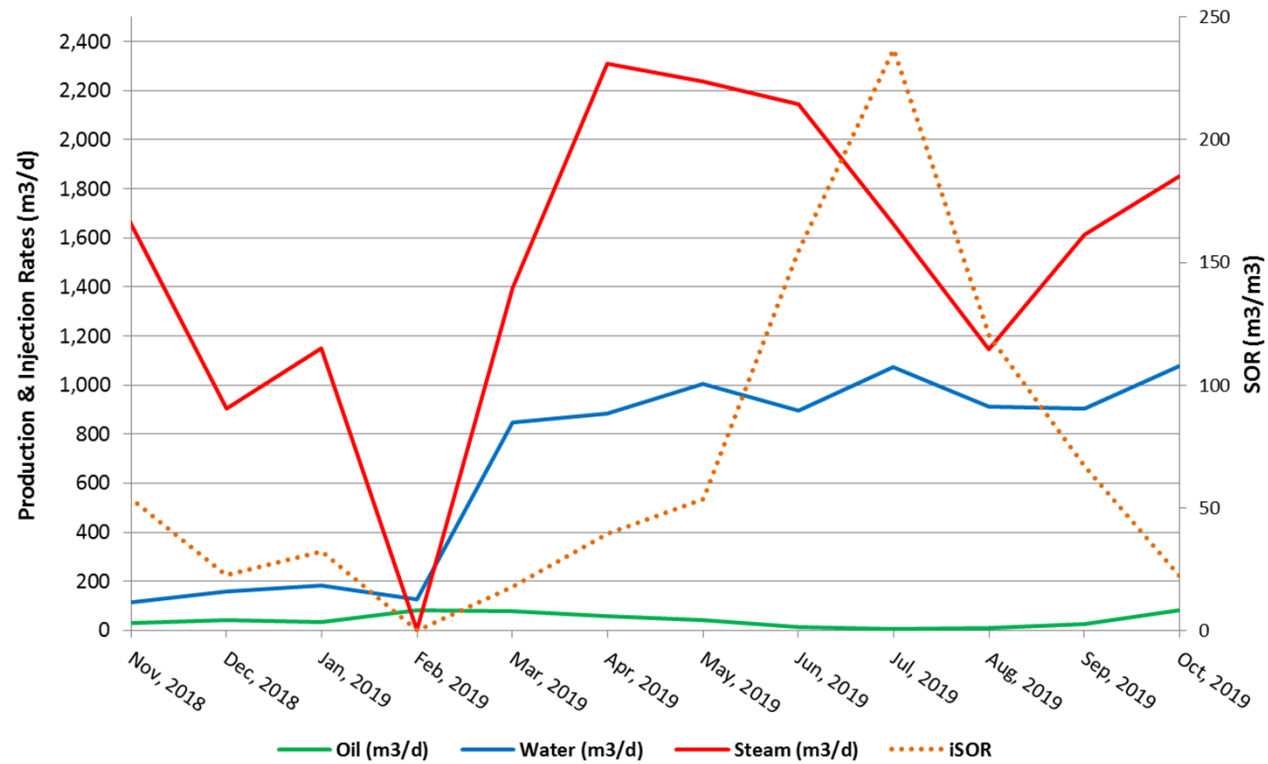
## Pad 31



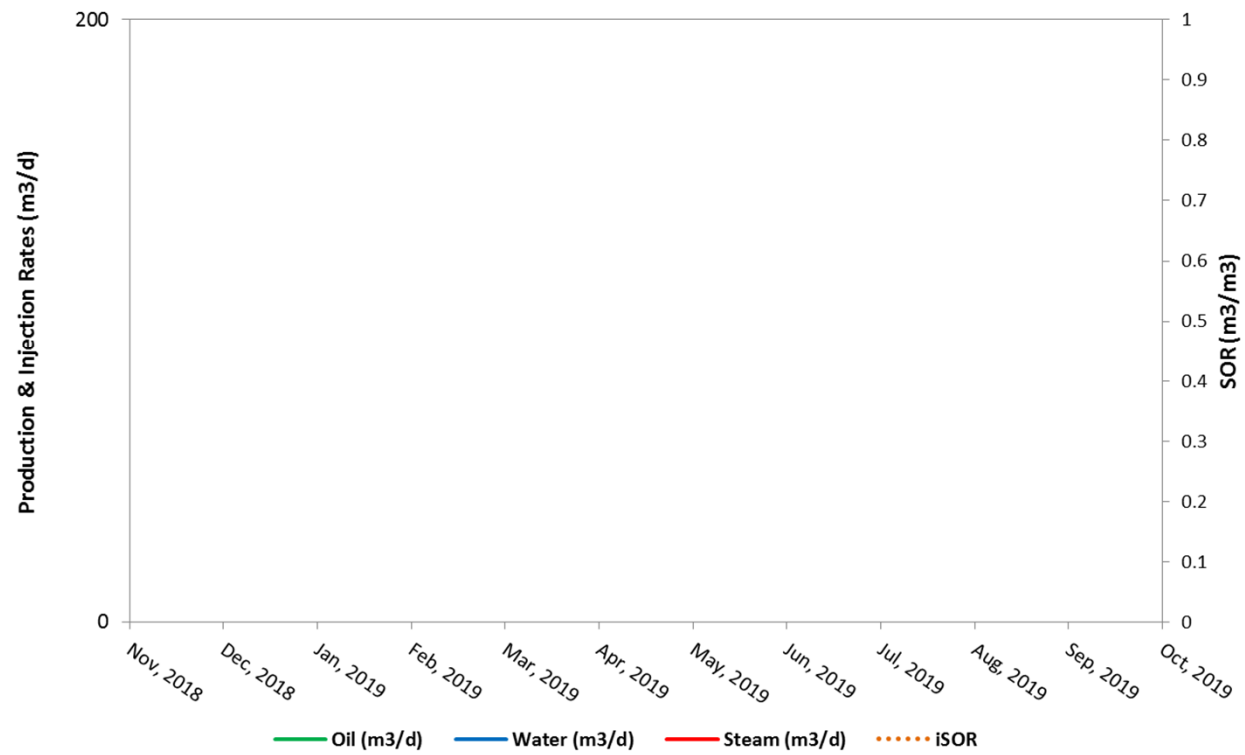
## Pad 32



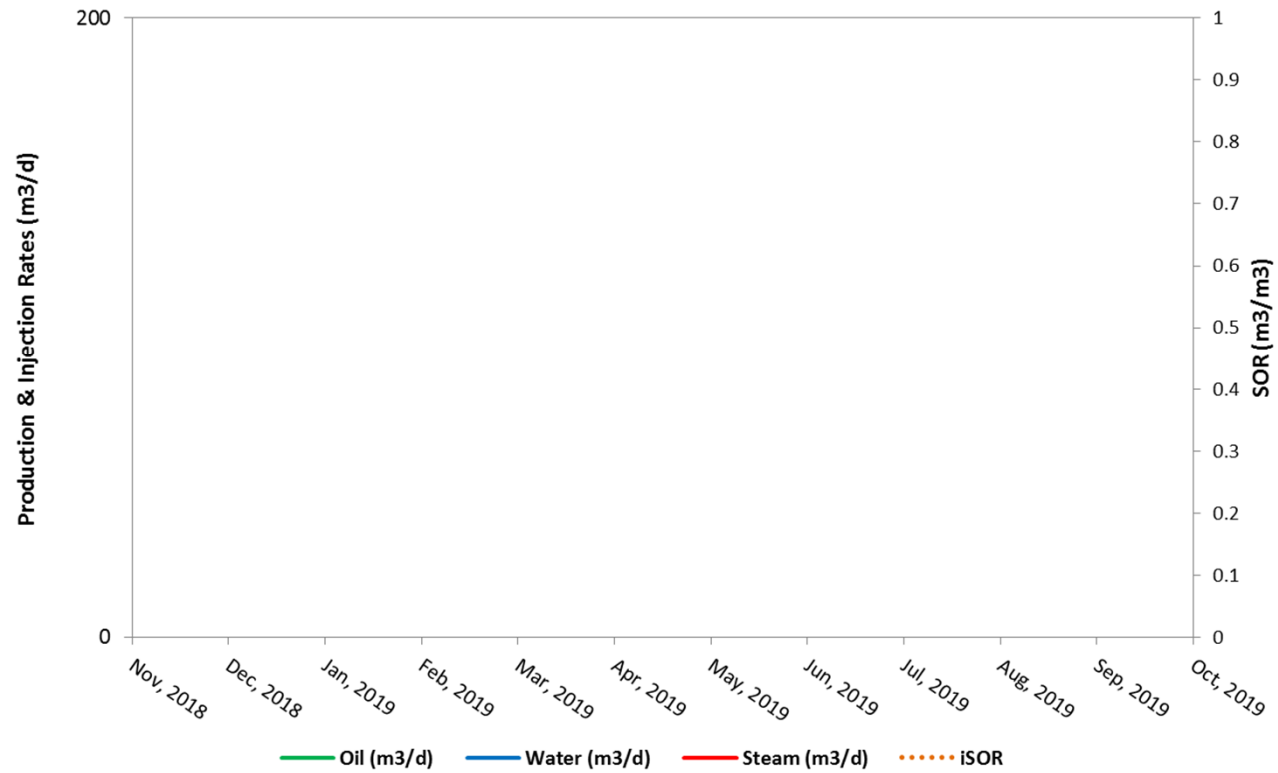
# Pad 33



### Pad 40 (Not Operational)



### Pad 41 (Not Operational)





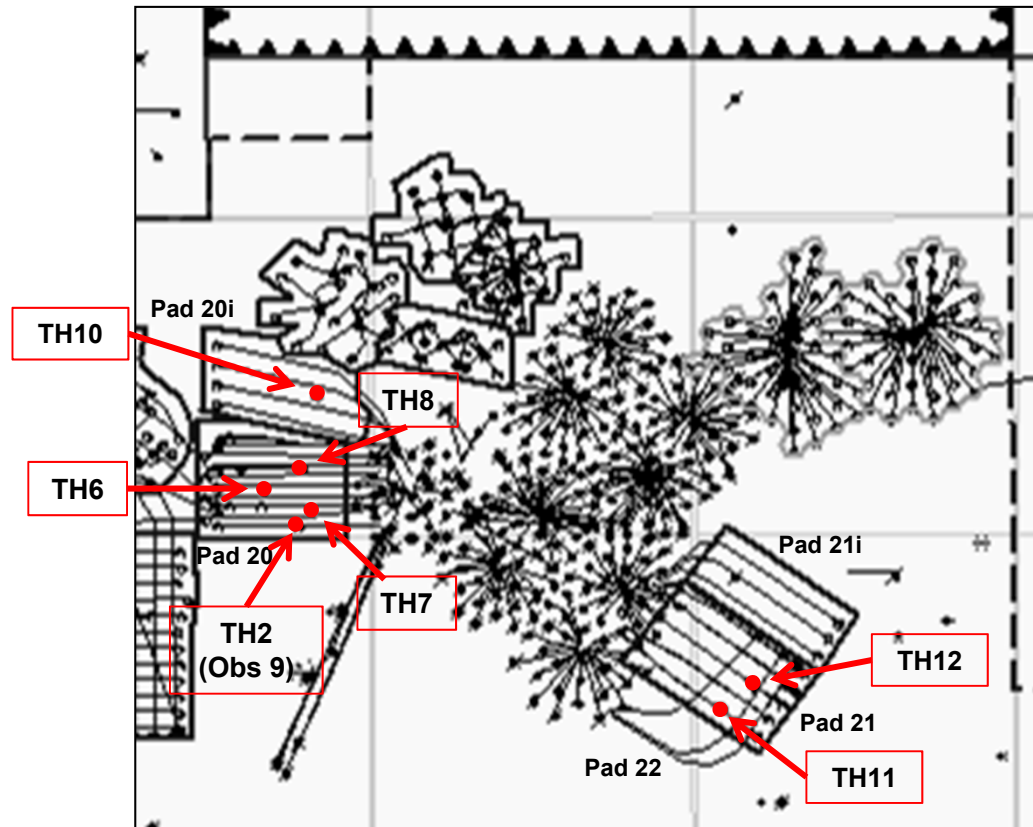


# TEMPERATURE AND PRESSURE OBSERVATION WELLS

December 4, 2019

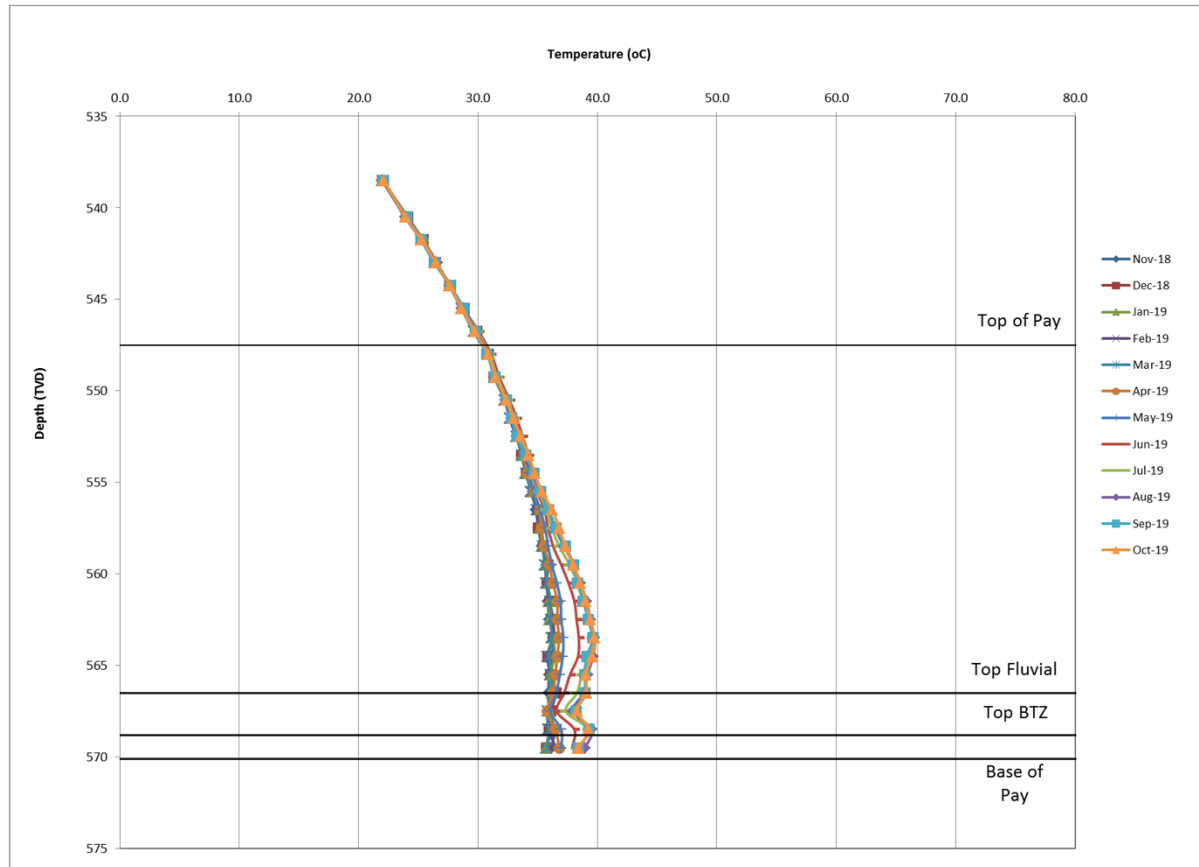
PREMIUM VALUE. DEFINED GROWTH. INDEPENDENT.

## Peace River Observation Wells Pad 20, 20i, 21, 21i & 22



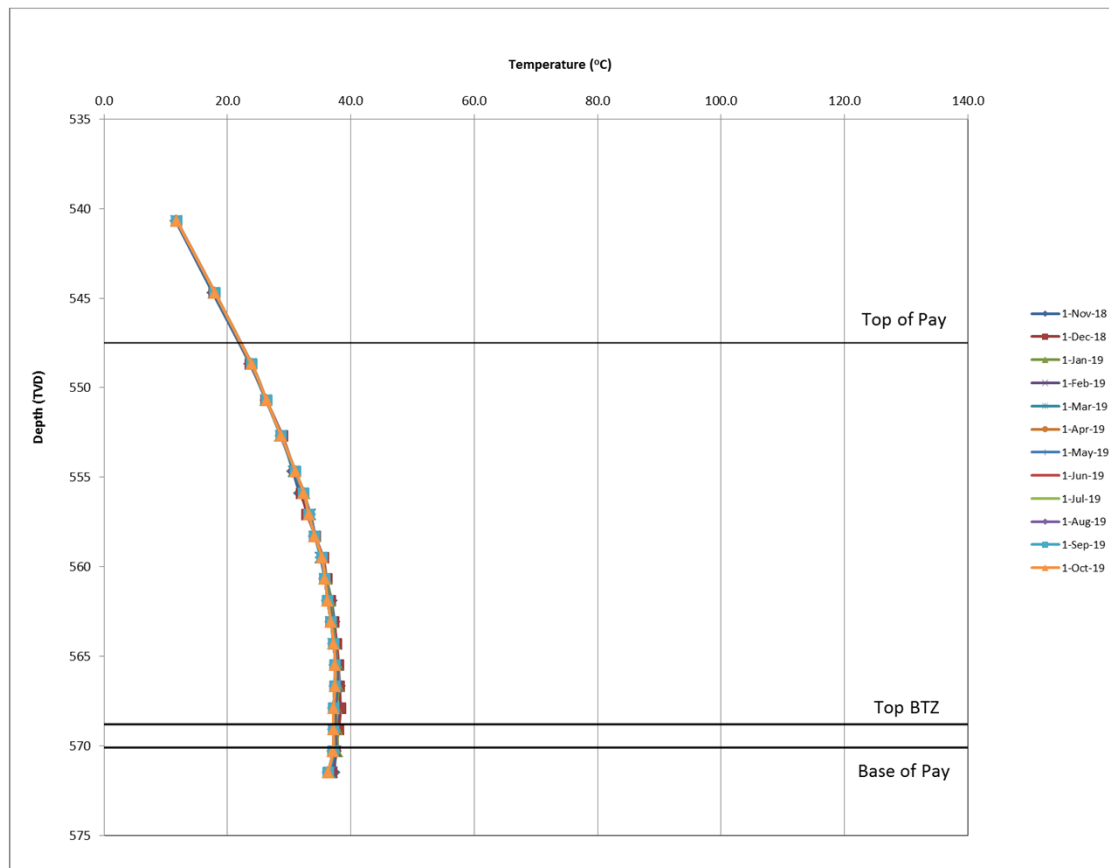
# Peace River Observation Wells

## Pad 20 Temperature Monitoring – TH6



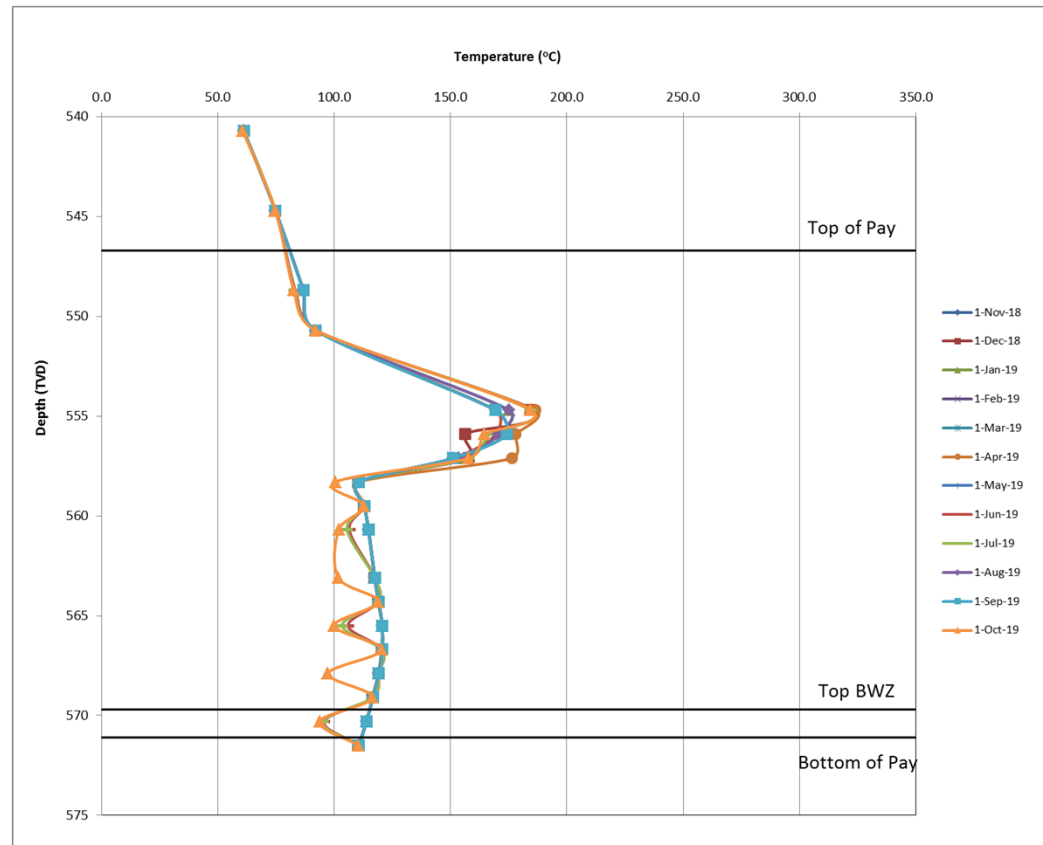
# Peace River Observation Wells

## Pad 20 Temperature Monitoring – TH7

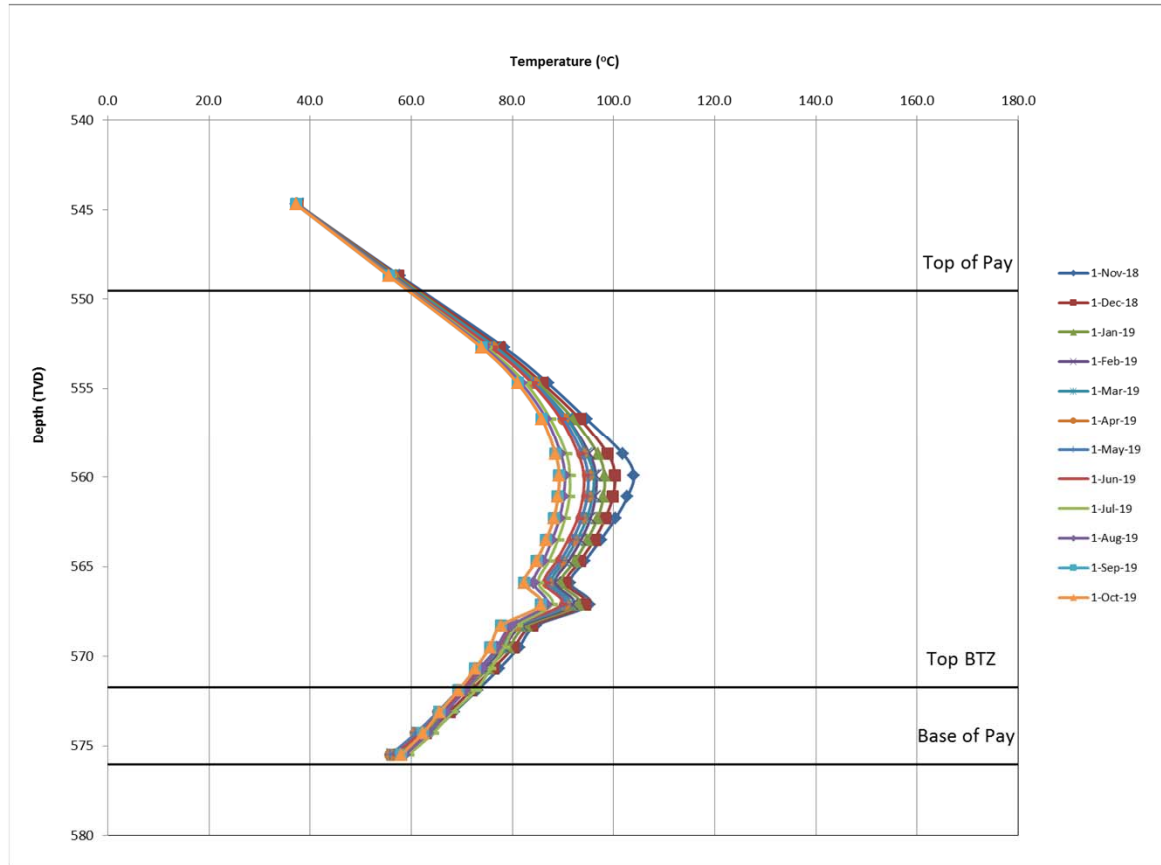


# Peace River Observation Wells

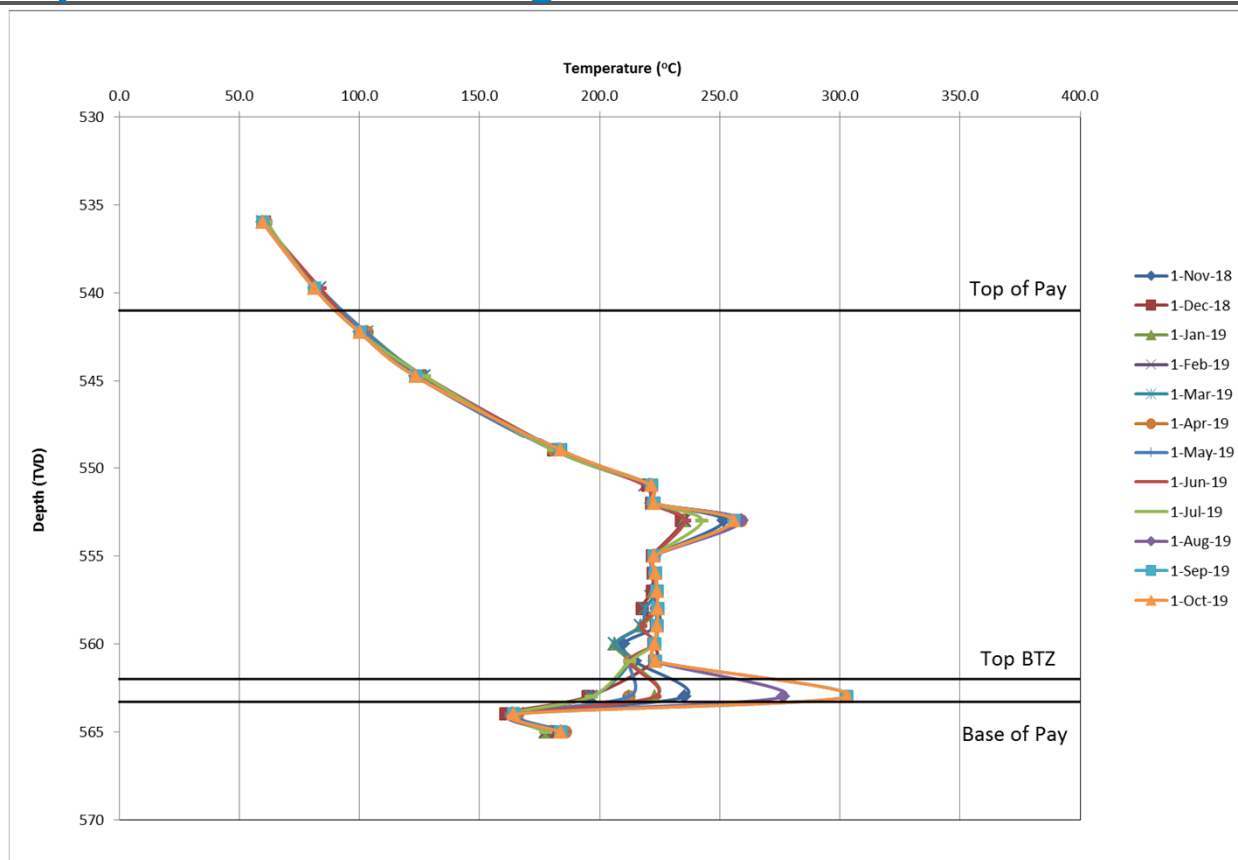
## Pad 20 Temperature Monitoring – TH8



## Peace River Observation Wells Pad 20 Temperature Monitoring – TH2 (Obs 9)

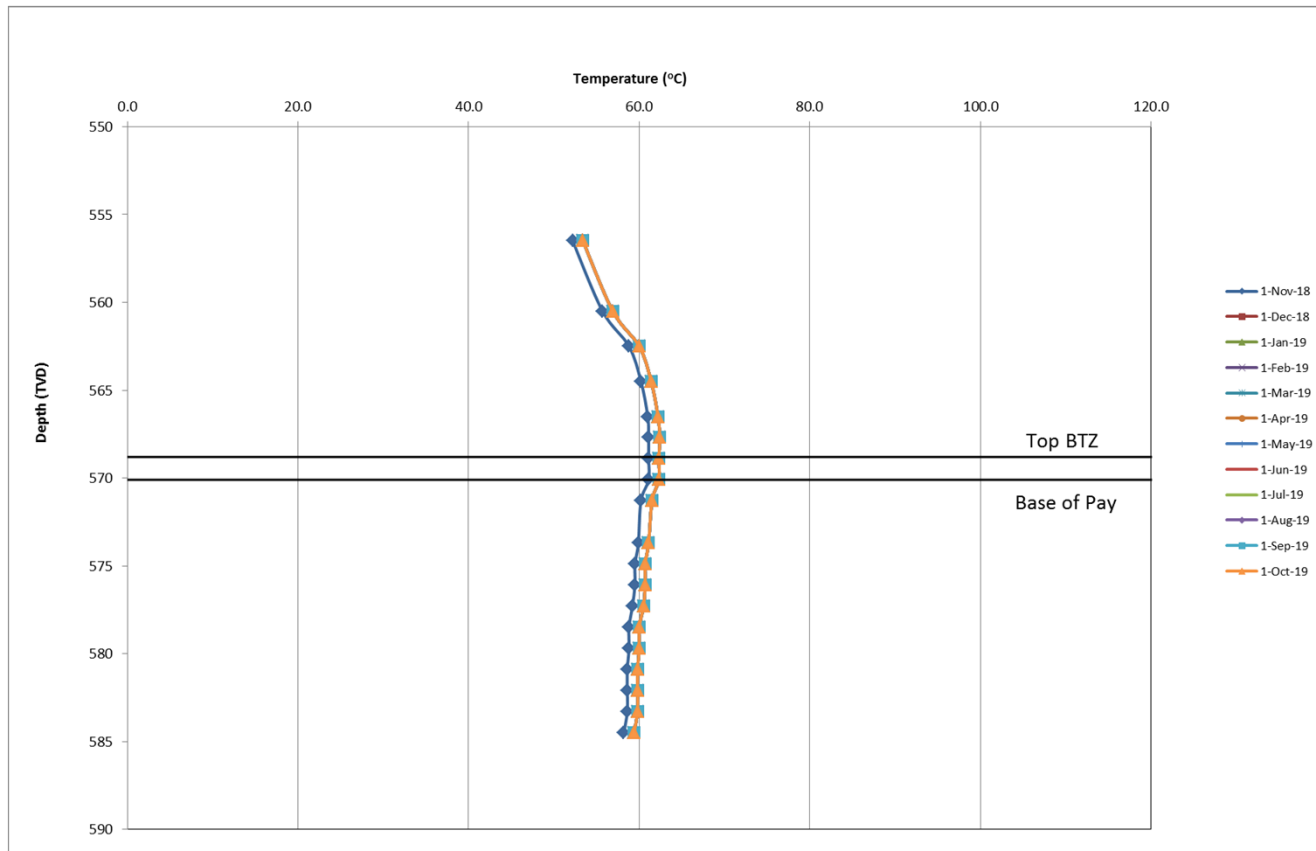


## Peace River Observation Wells Pad 20 Temperature Monitoring – TH10



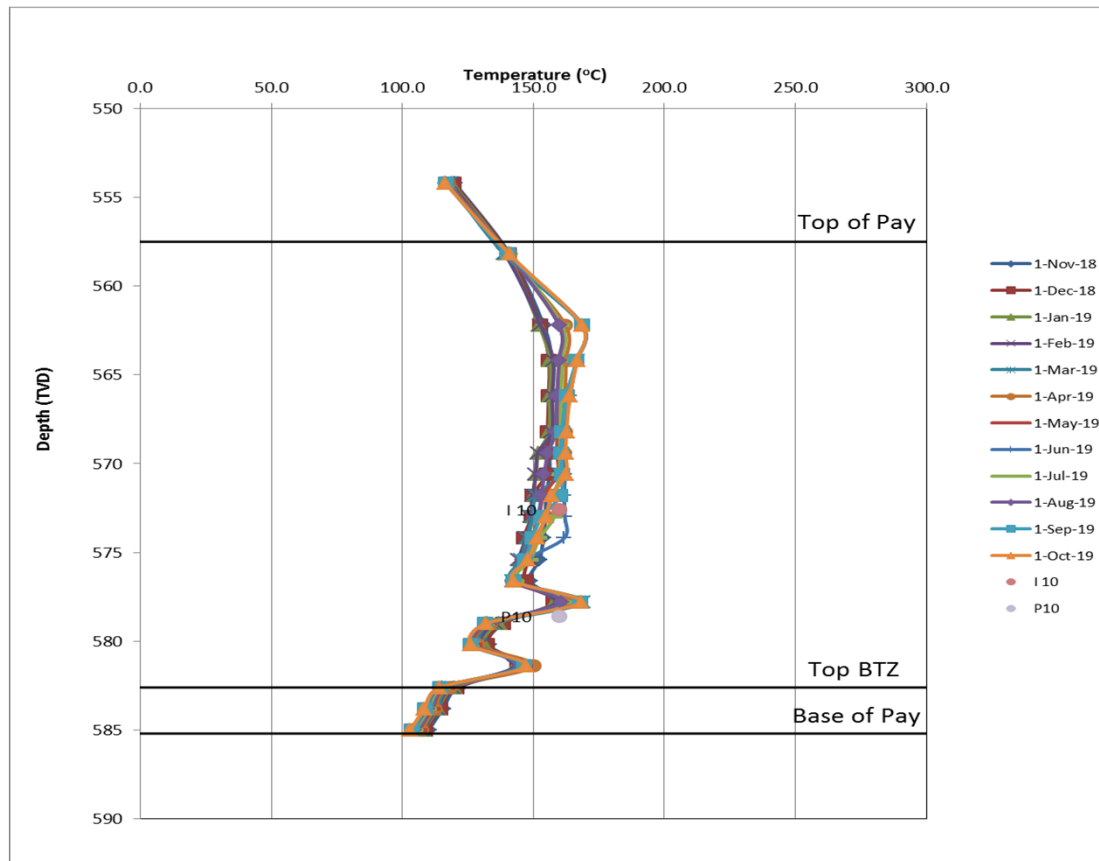
# Peace River Observation Wells

## Pad 21 Temperature Monitoring – TH11

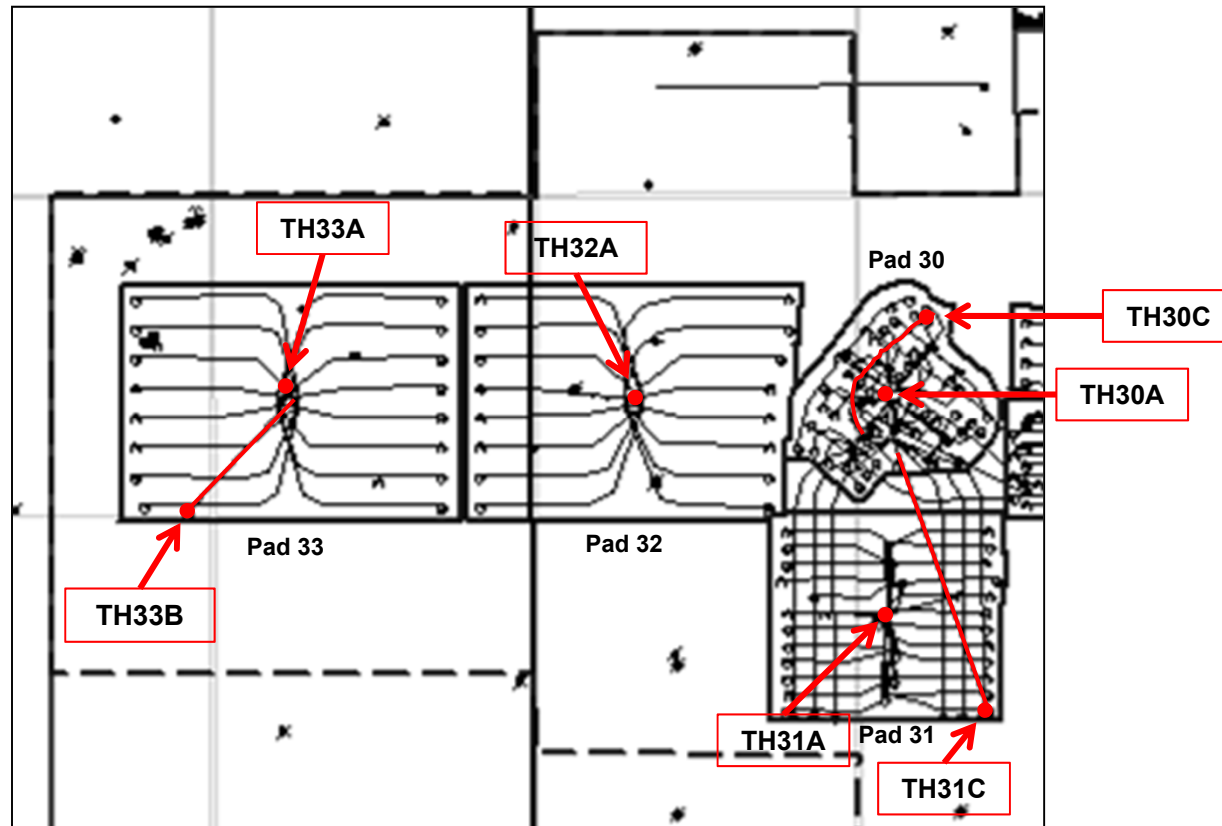




## Peace River Observation Wells Pad 21 Temperature Monitoring – TH12

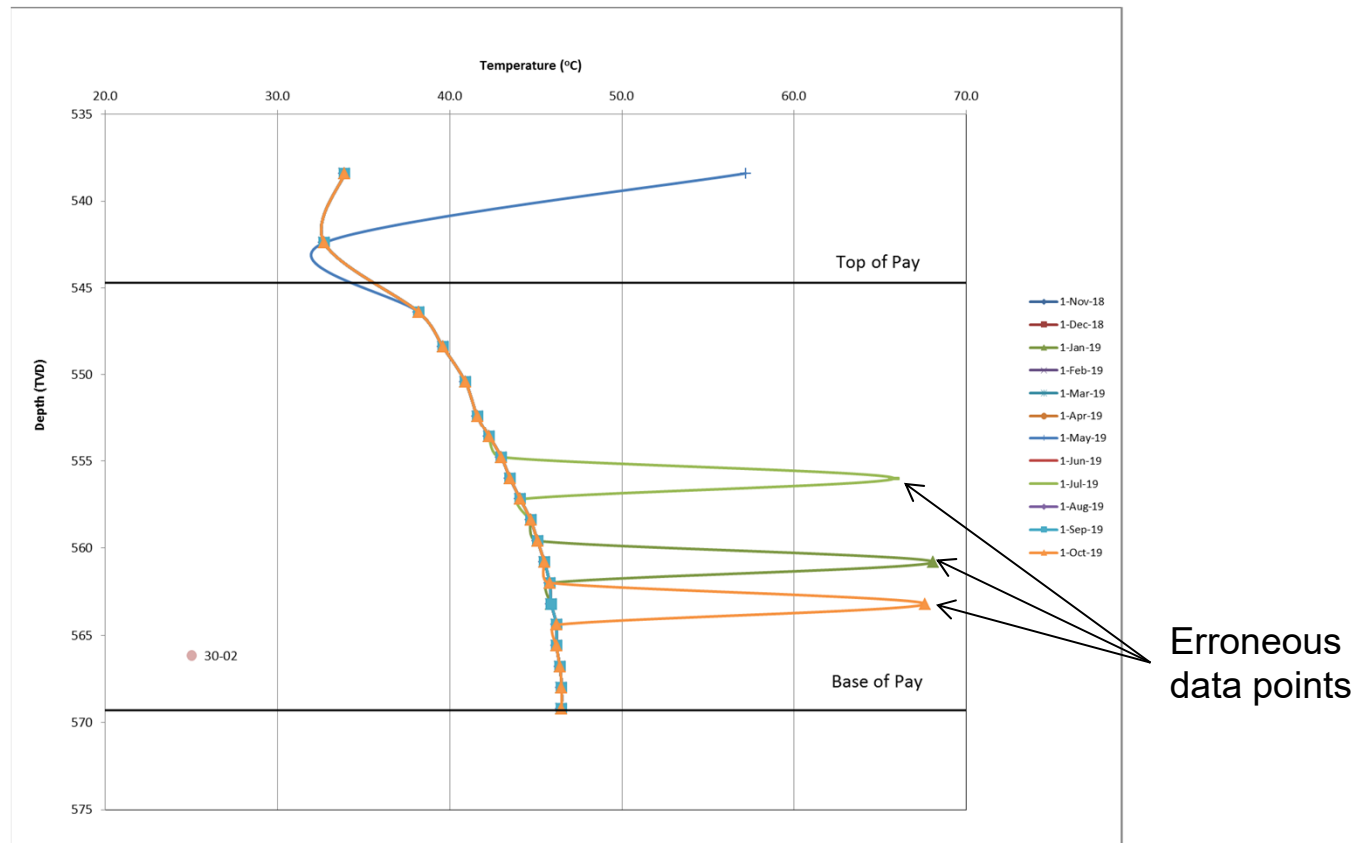


## Peace River Observation Wells Pad 30, 31, 32 & 33

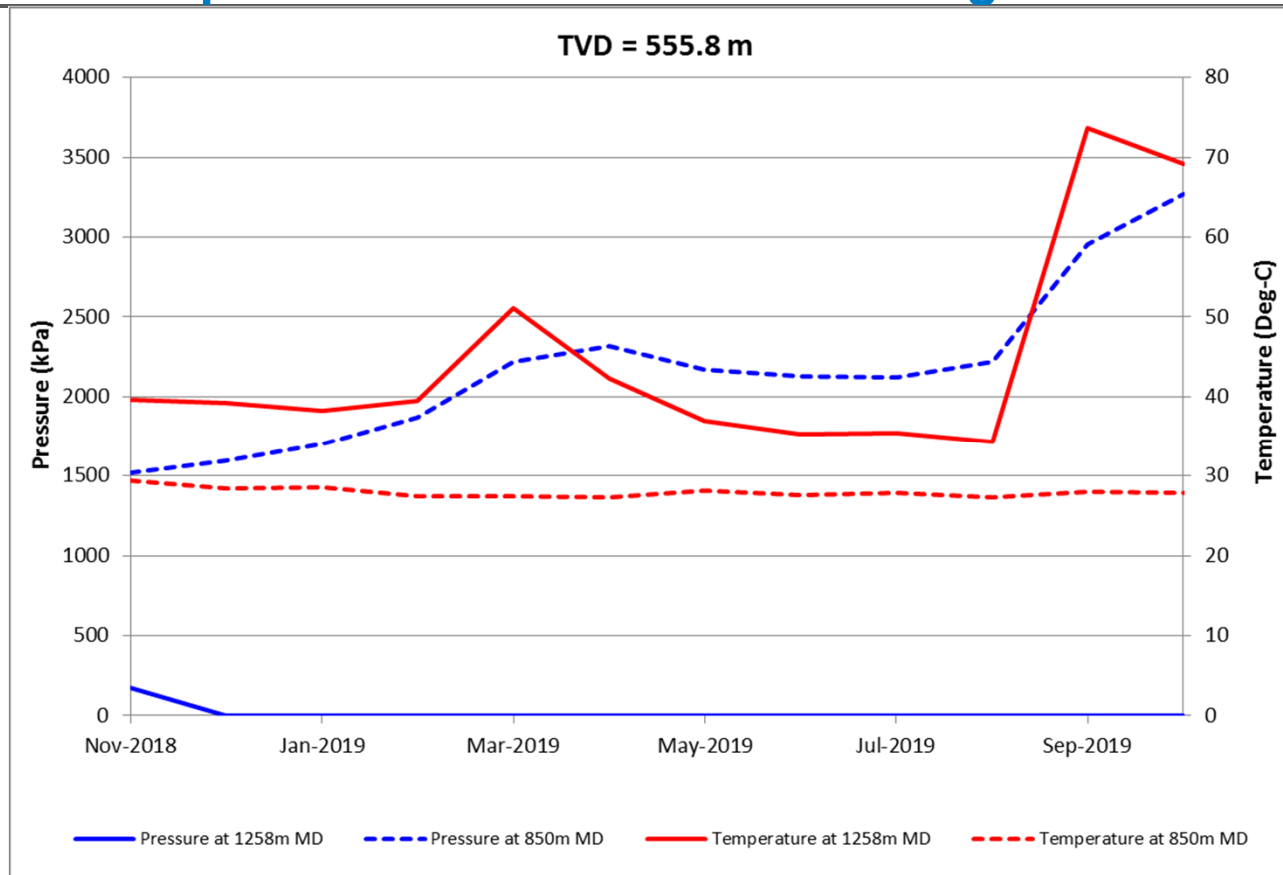


# Peace River Observation Wells

## Pad 30 Temperature Monitoring – TH30A



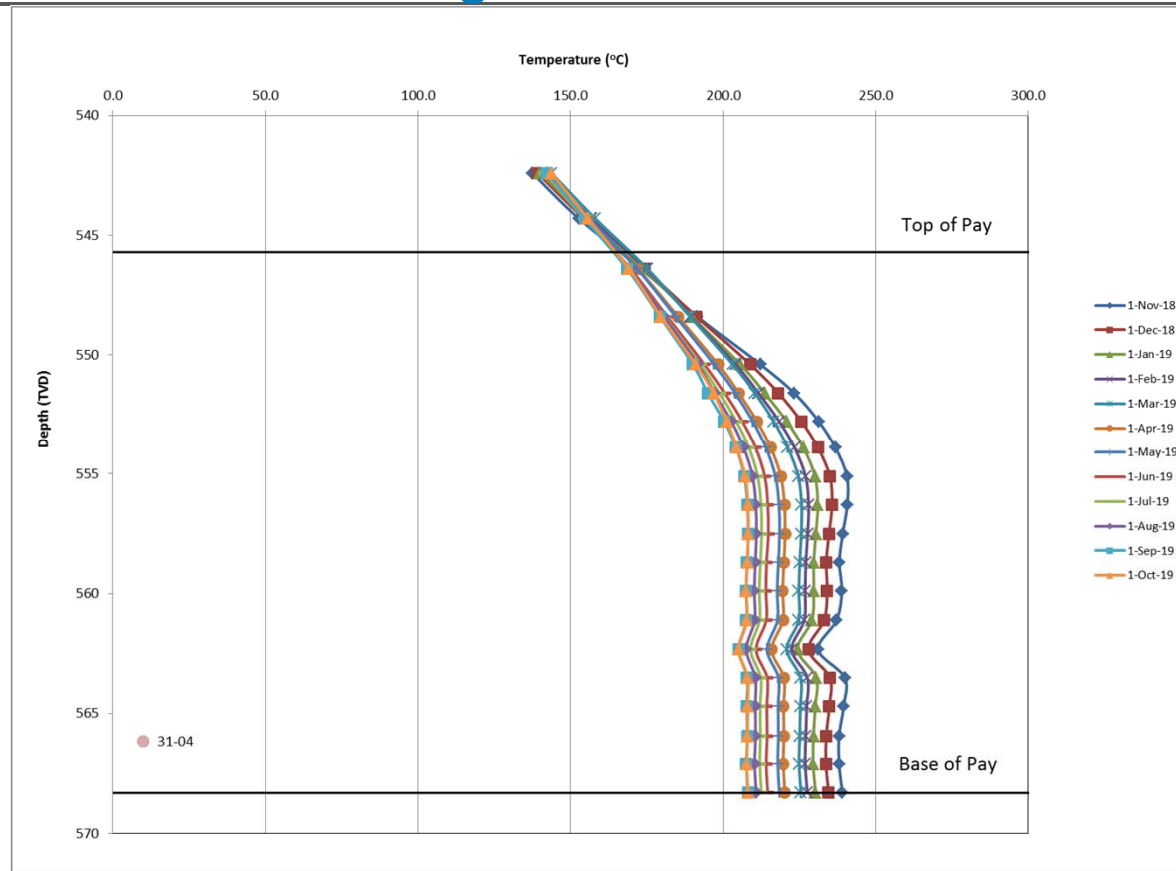
## Peace River Observation Wells Pad 30 Temperature & Pressure Monitoring – TH30C



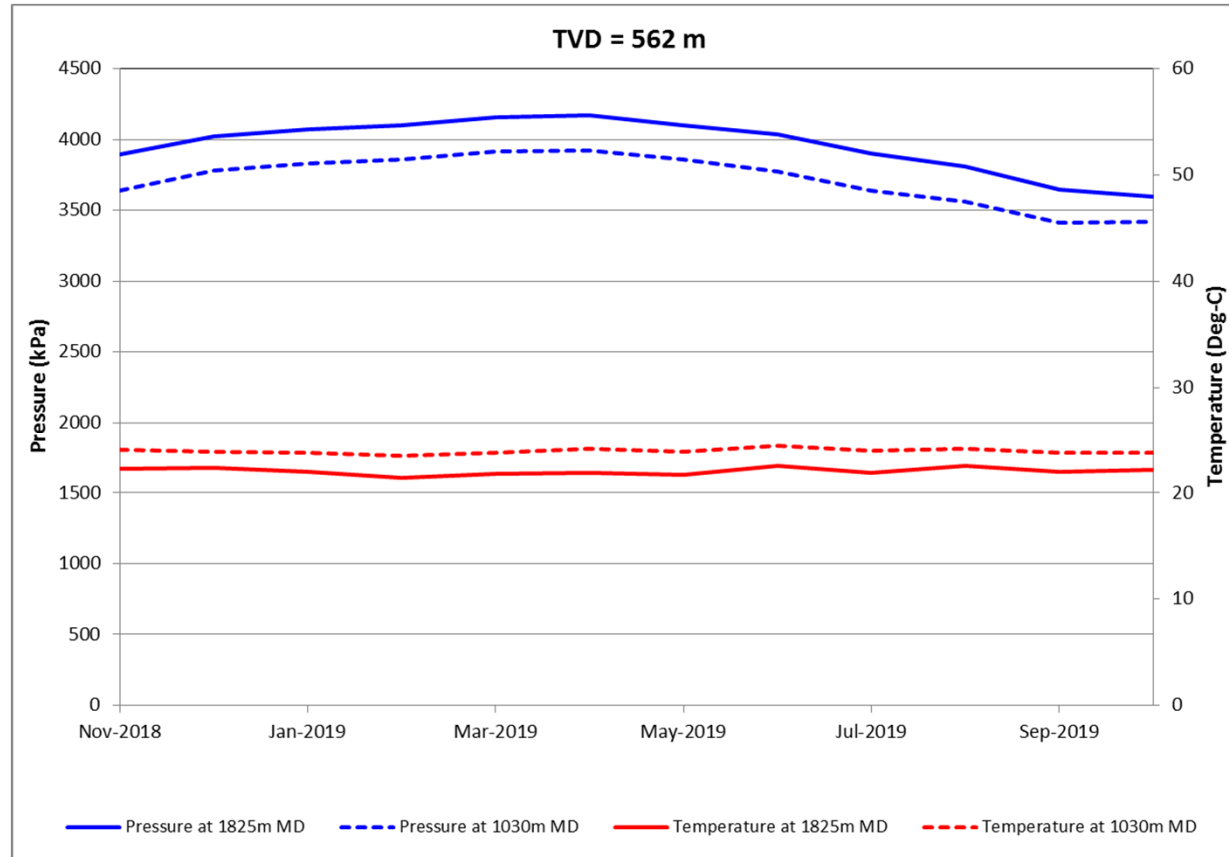
Lost pressure node  
at 1258mKB MD in  
Nov 2018

# Peace River Observation Wells

## Pad 31 Temperature Monitoring – TH31A

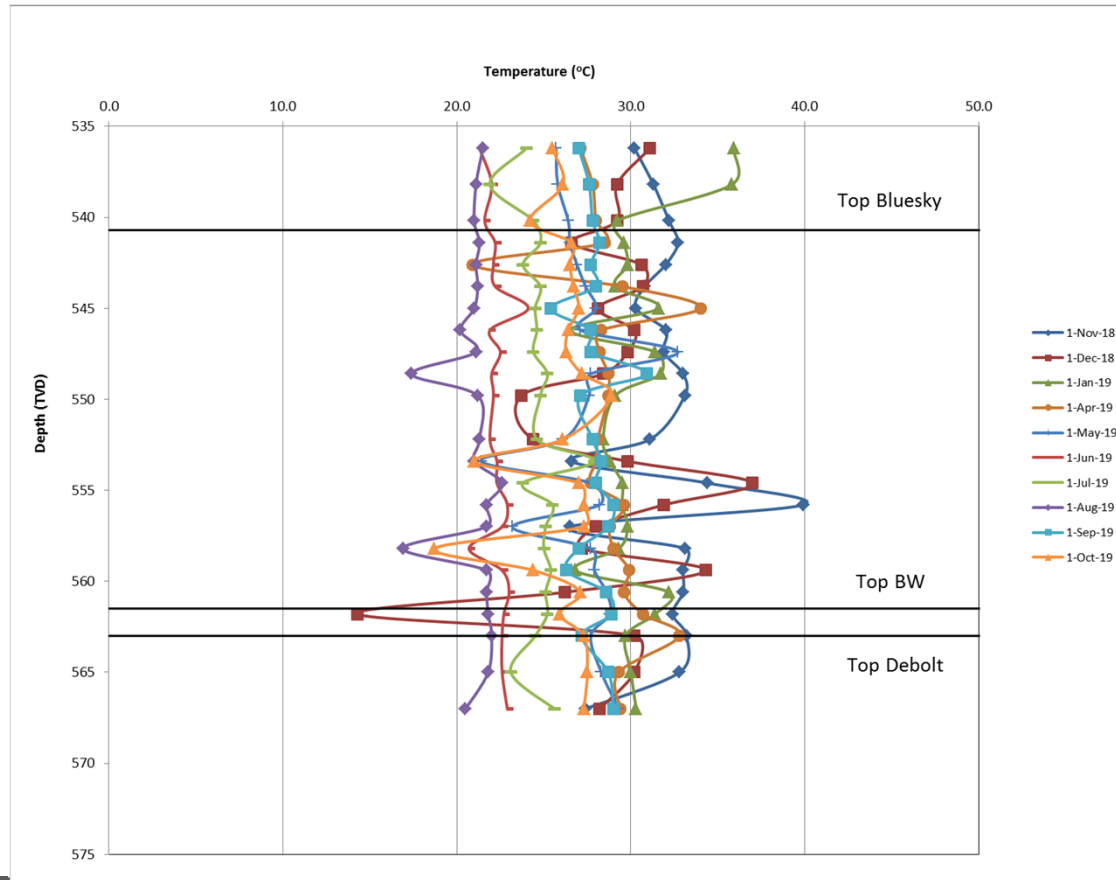


## Peace River Observation Wells Pad 31 Temperature & Pressure Monitoring – TH31C



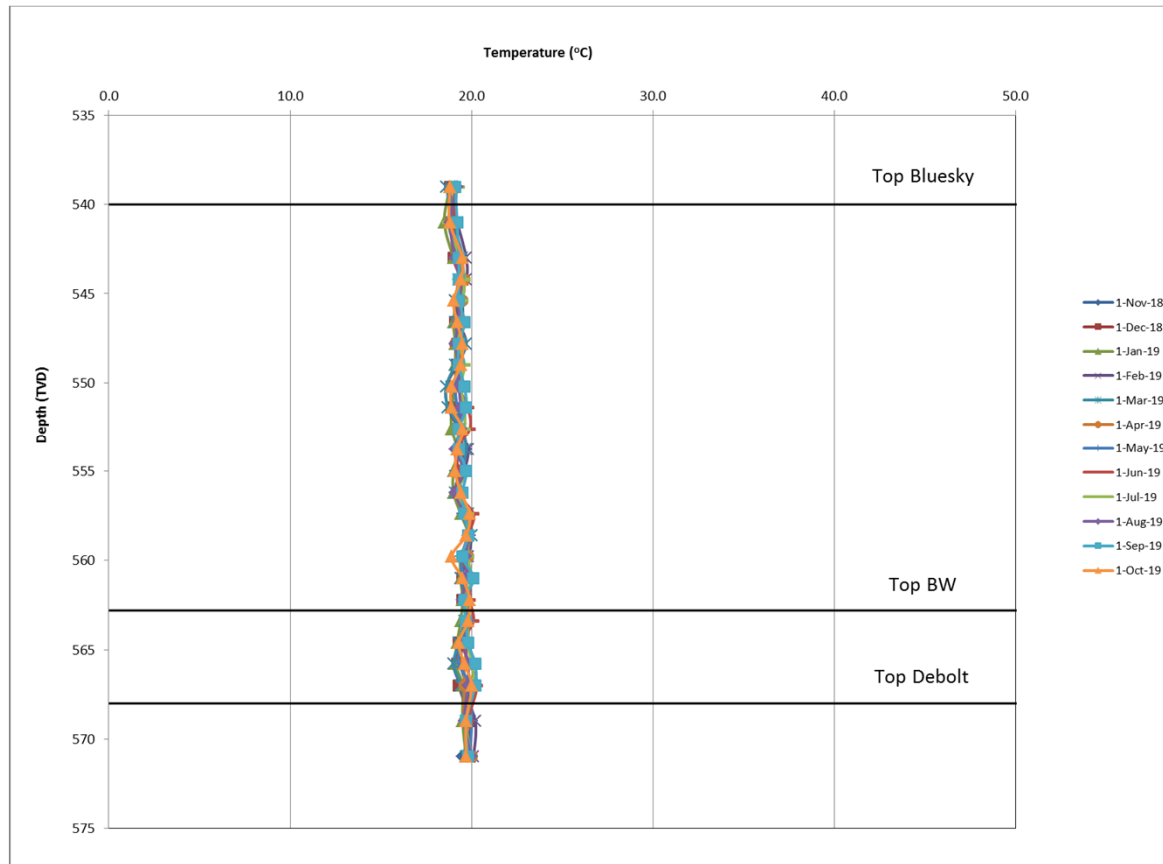
# Peace River Observation Wells

## Pad 32 Temperature Monitoring – TH32A



# Peace River Observation Wells

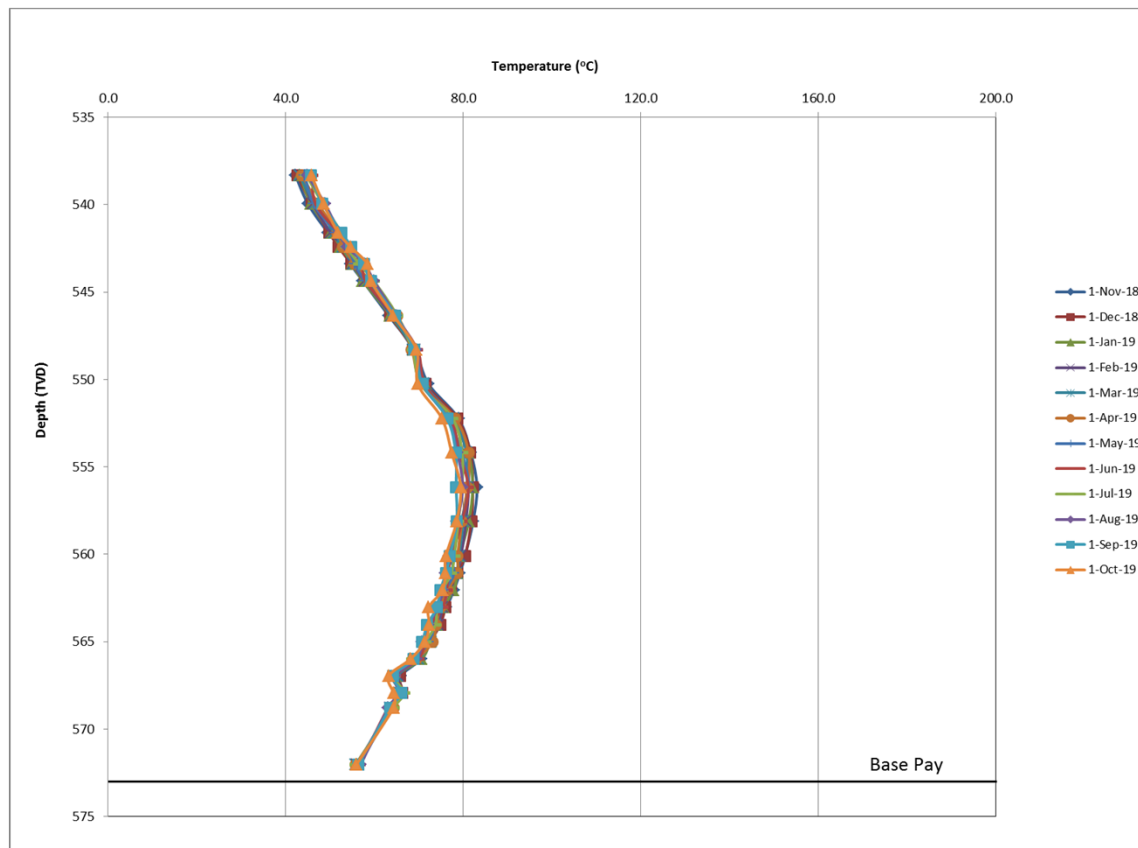
## Pad 33 Temperature Monitoring – TH33A



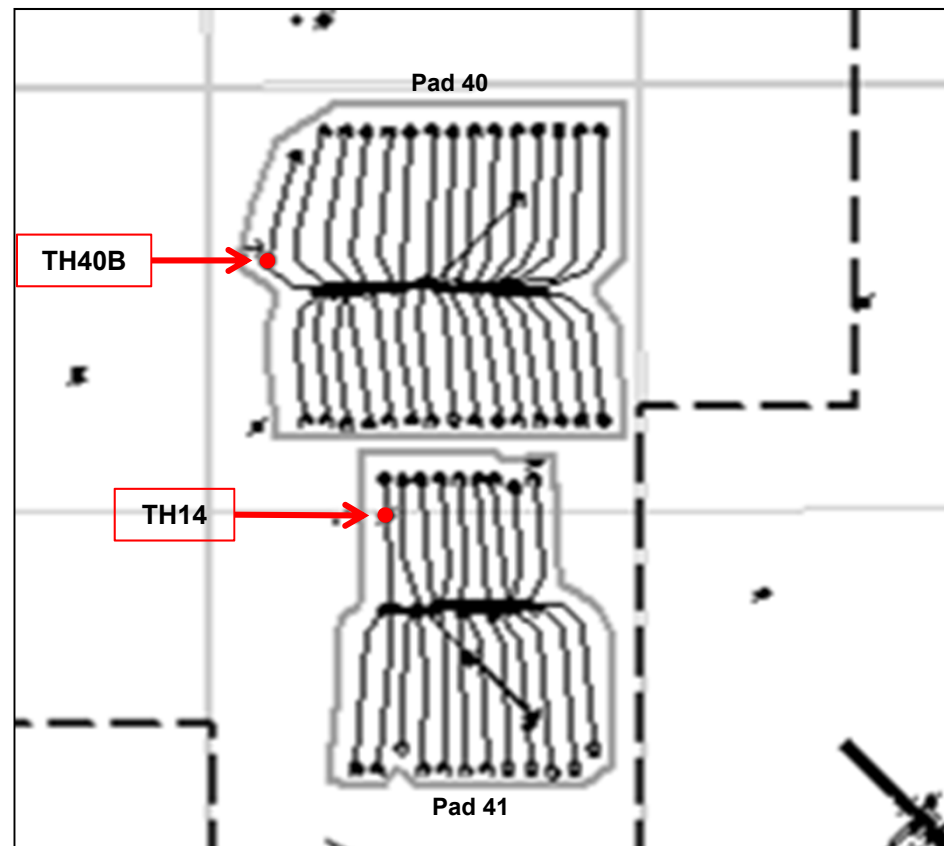


# Peace River Observation Wells

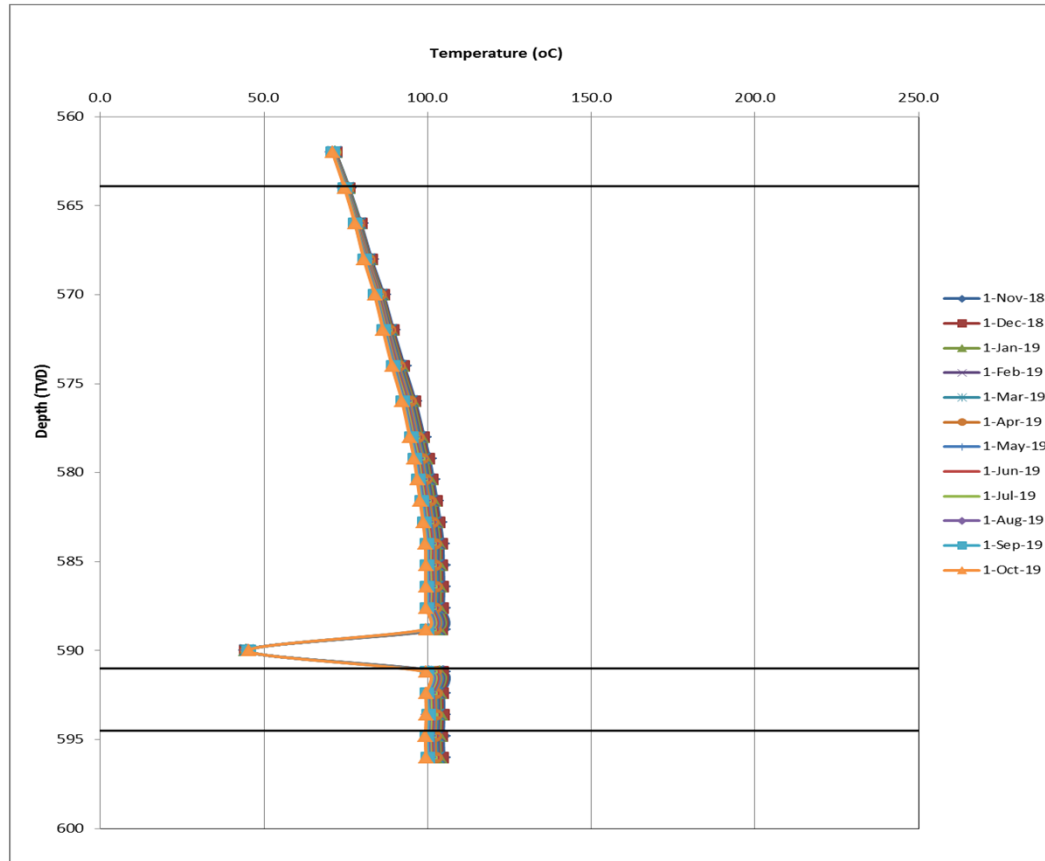
## Pad 33 Temperature Monitoring – TH33B



## Peace River Observation Wells Pad 40 & 41

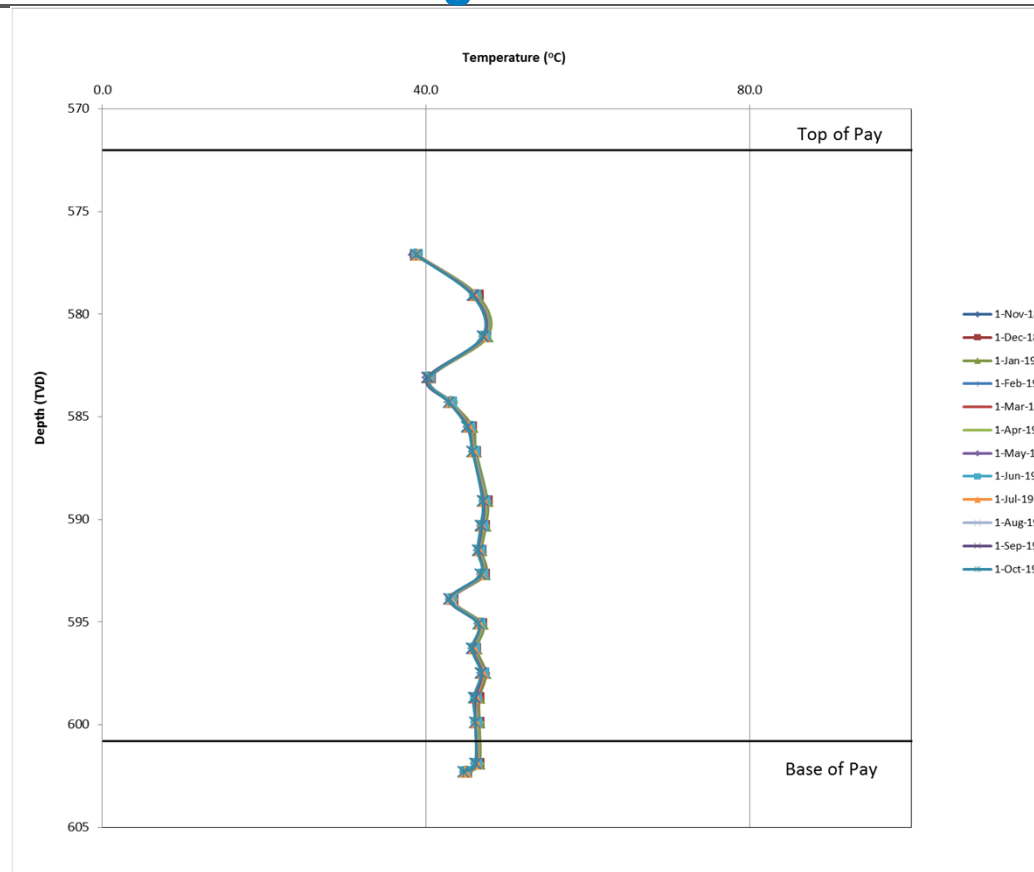


## Peace River Observation Wells Pad 40 Temperature Monitoring – TH40B



# Peace River Observation Wells

## Pad 41 Temperature Monitoring – TH14

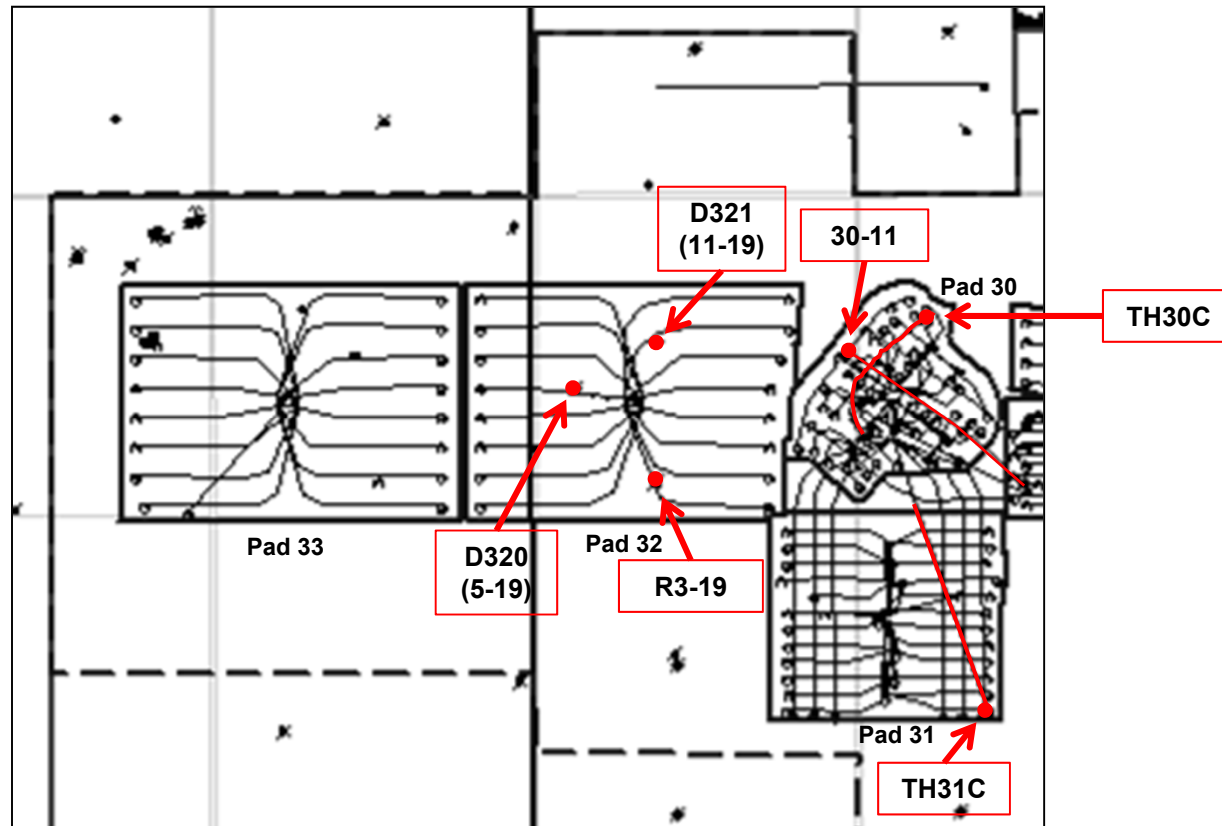




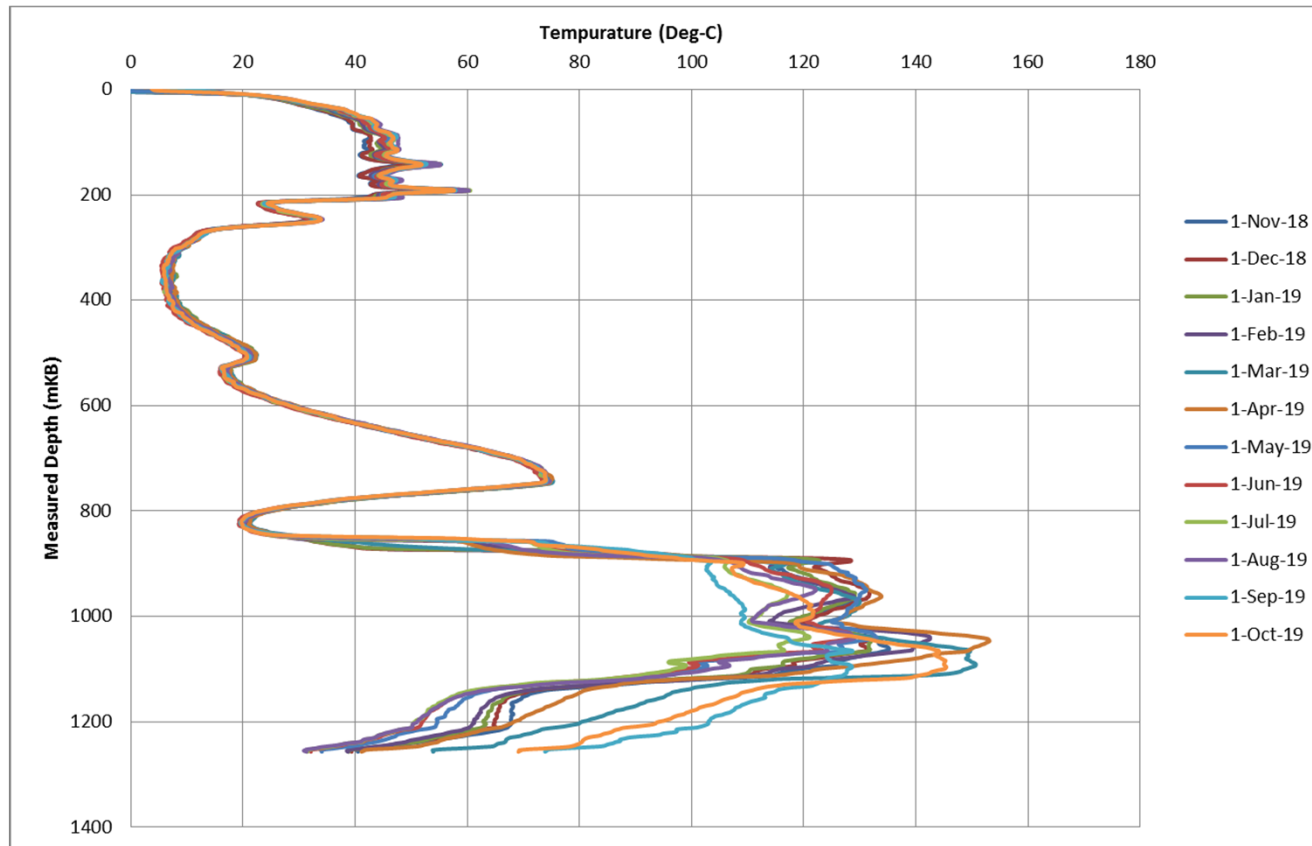
## THERMAL FIBER DATA

PREMIUM VALUE. DEFINED GROWTH. INDEPENDENT.

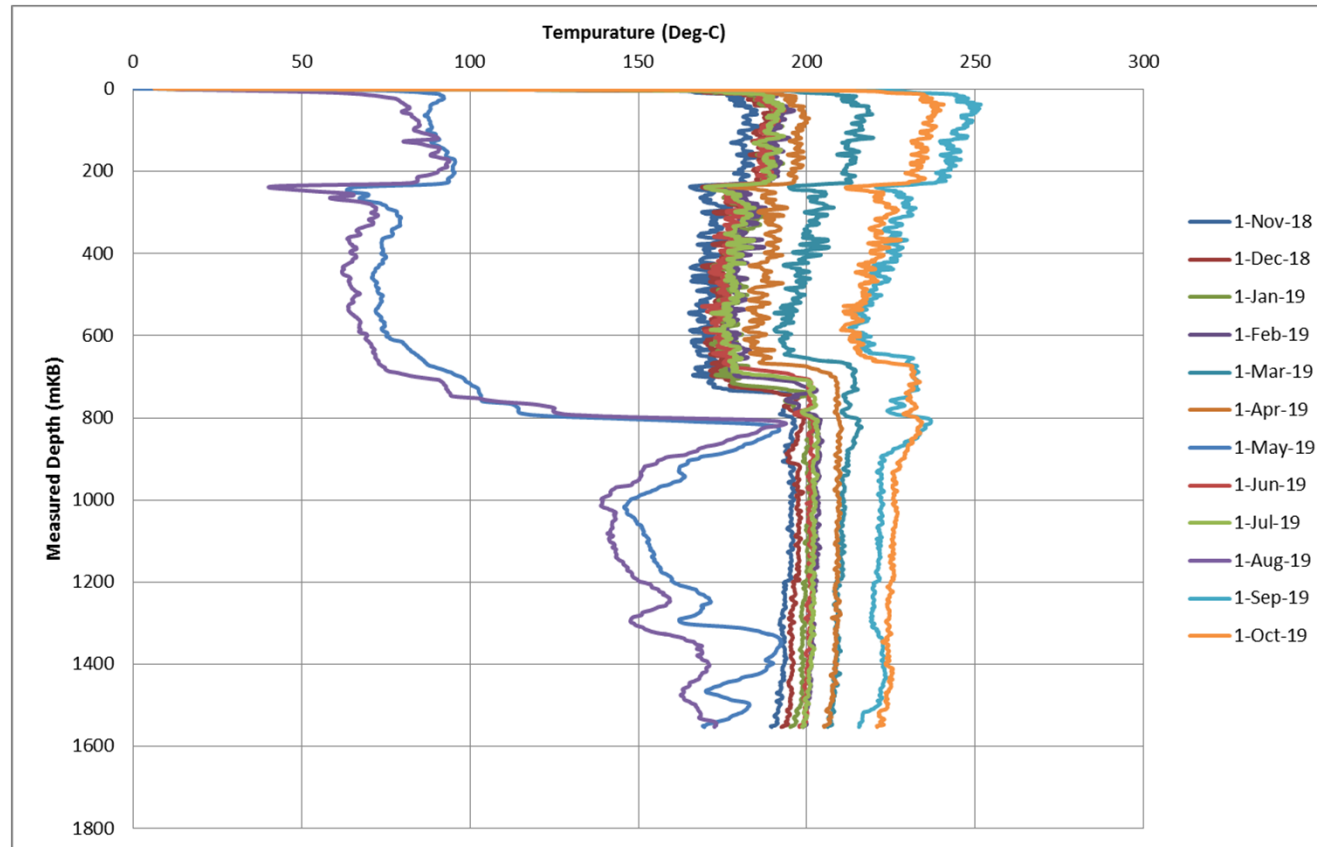
## Peace River Thermal Fiber Wells Pad 30, 31 & 32



## Peace River Thermal Fiber Wells Pad 30 – TH30C

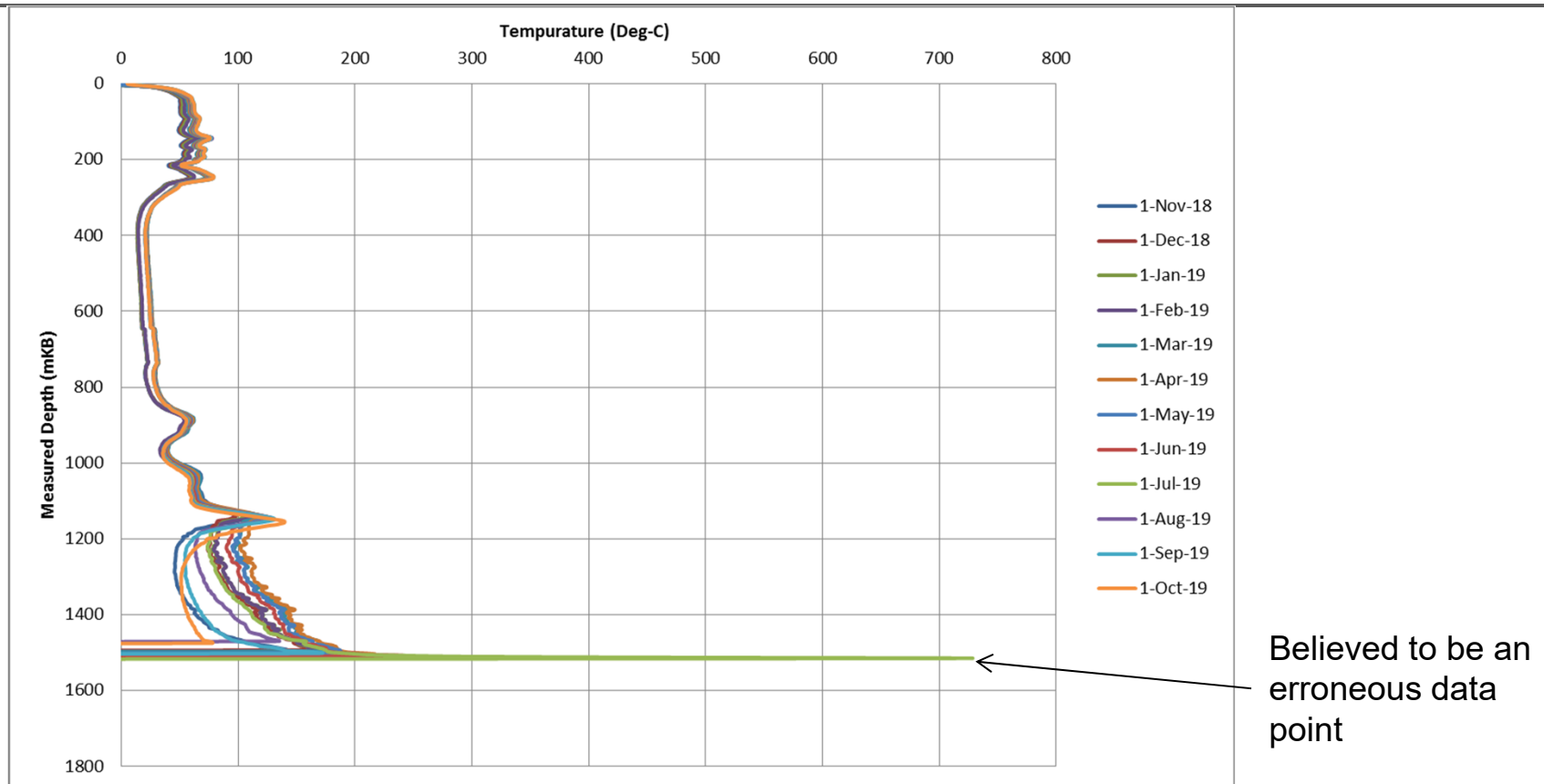


## Peace River Thermal Fiber Wells Pad 30 – 30-11

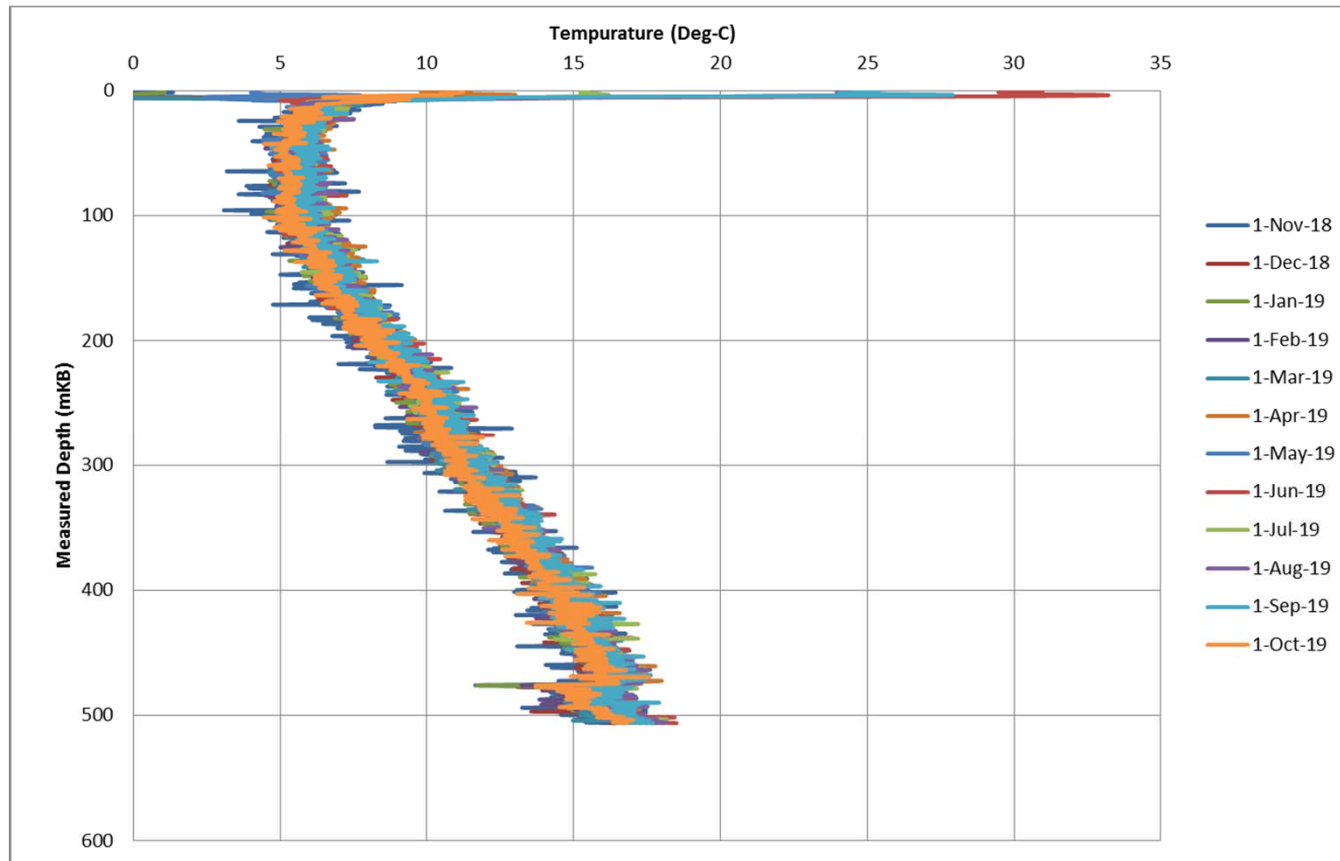




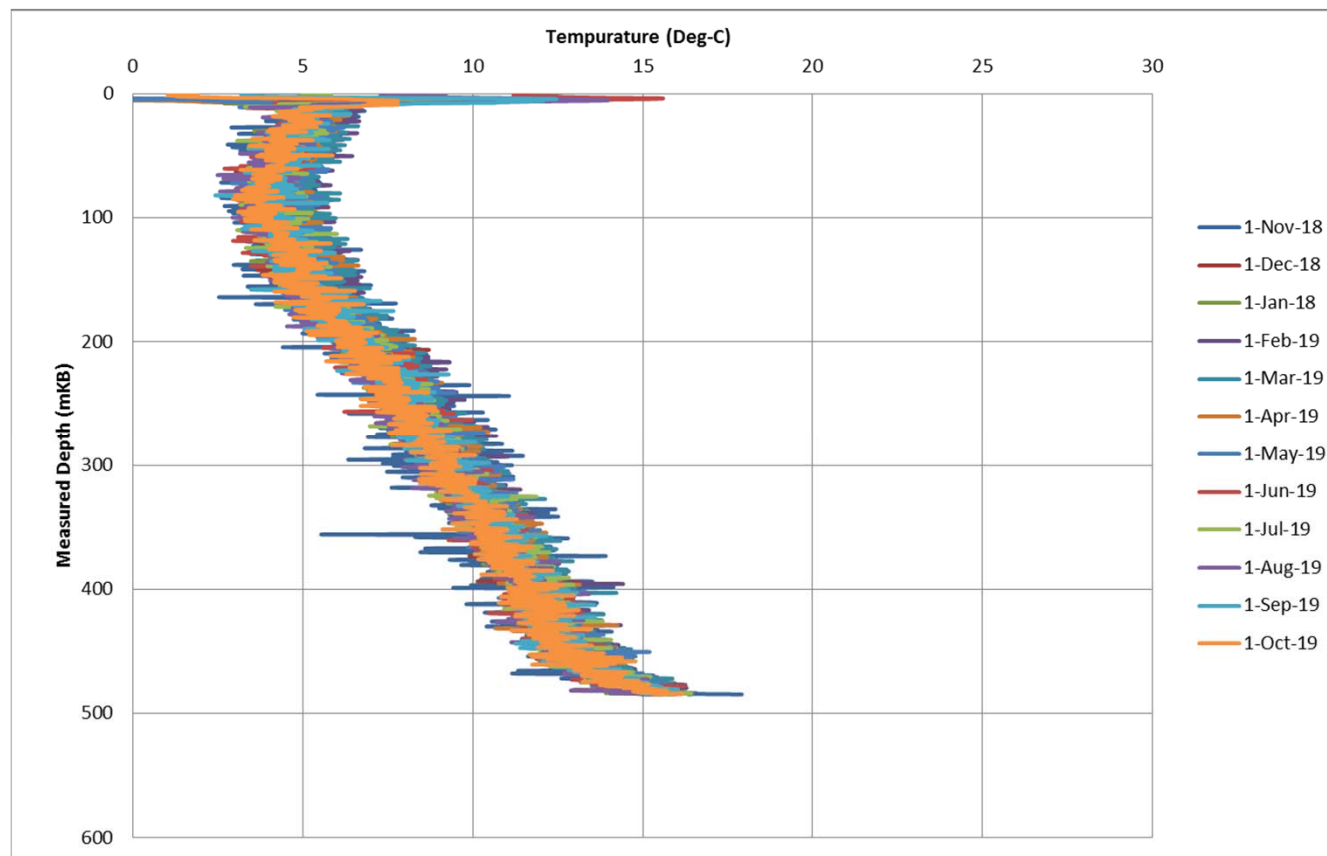
## Peace River Thermal Fiber Wells Pad 31 – TH31C



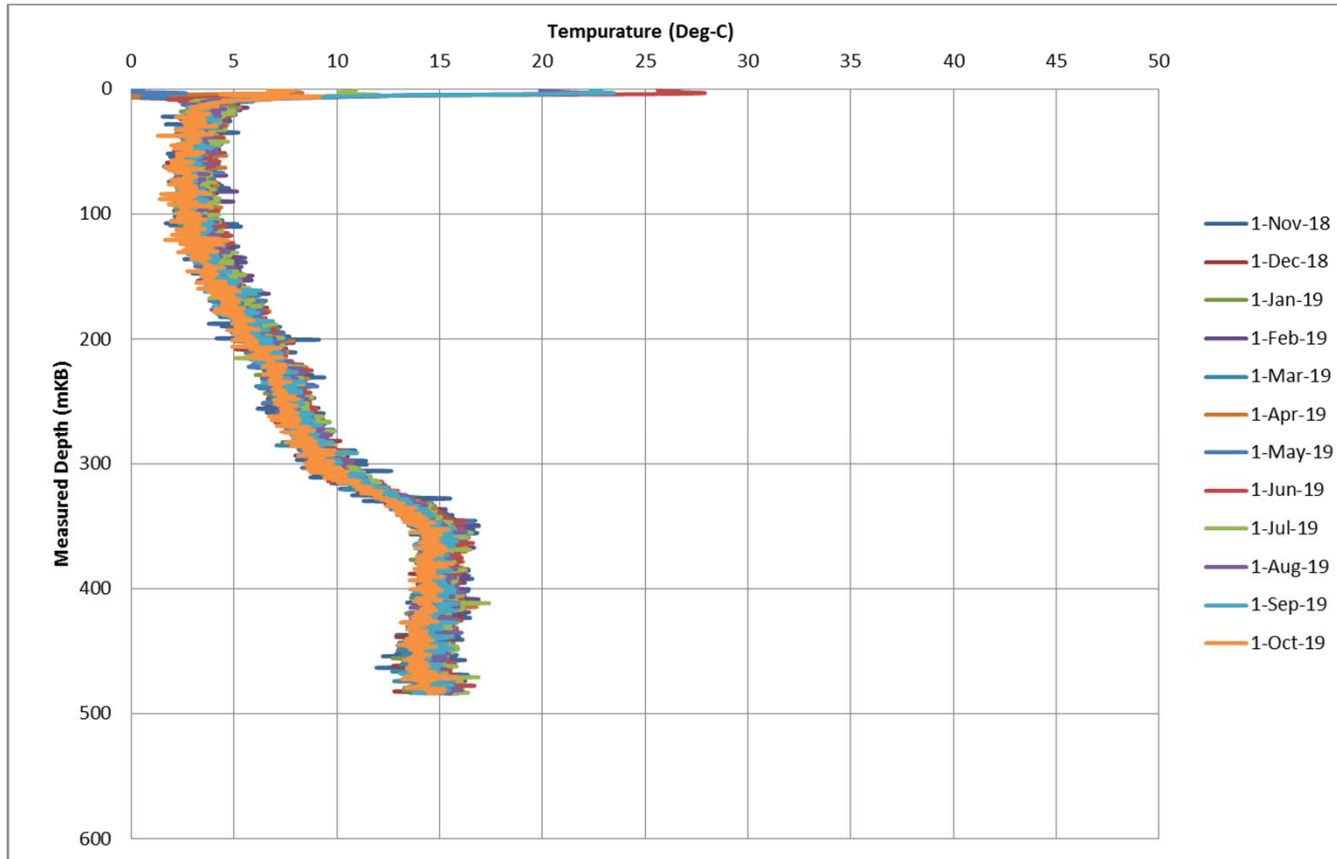
## Peace River Thermal Fiber Wells Pad 32 – R3-19



## Peace River Thermal Fiber Wells Pad 32 – D321 (11-19)



## Peace River Thermal Fiber Wells Pad 32 – D320 (5-19)





**Canadian Natural**

PROVEN



EFFECTIVE



STRATEGY